

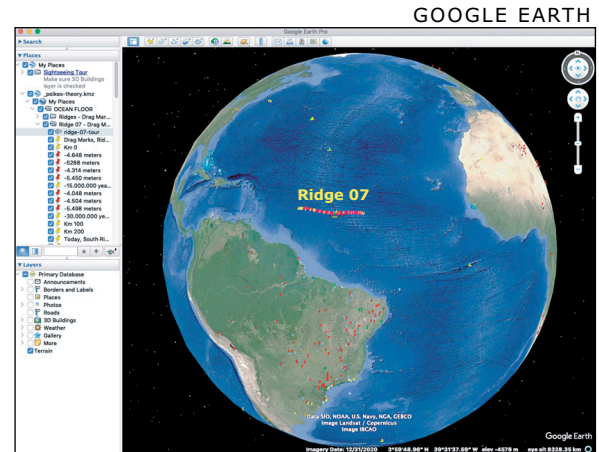
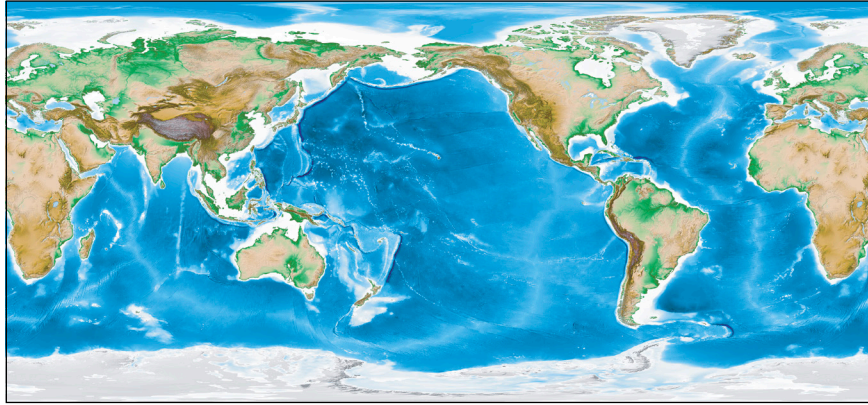
# Poike's Theory presents:

Available in  (en-us) and  (pt-br)

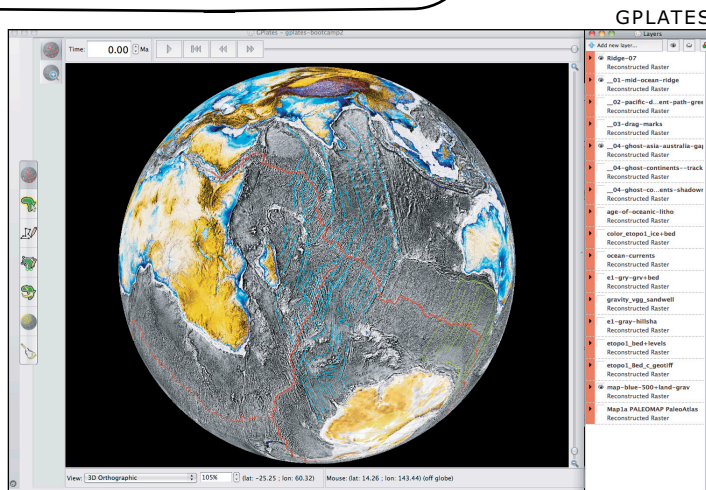
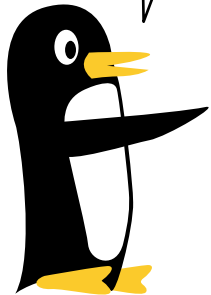
# BOOT CAMP #3

Part 1

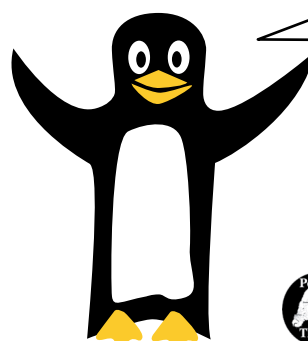
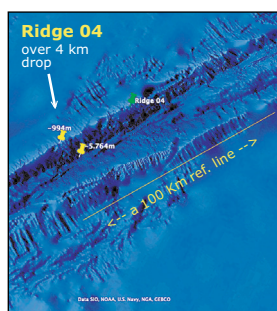
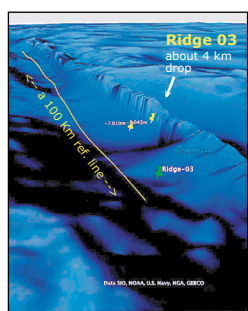
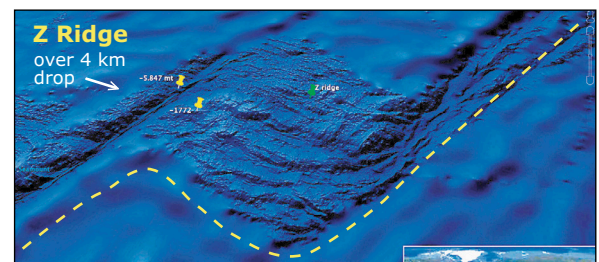
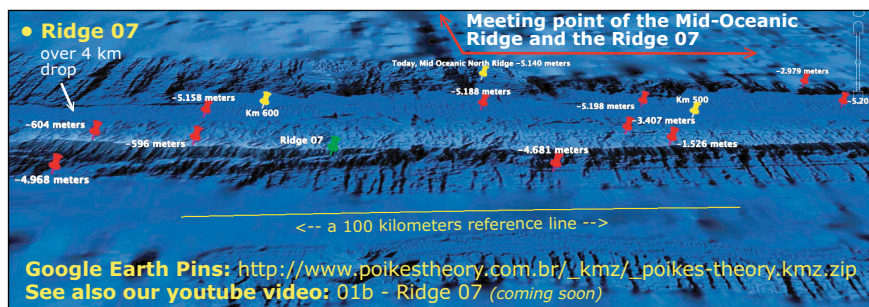
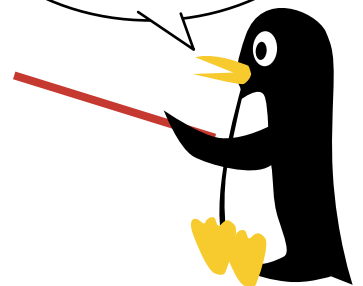
DISCOVER THE DRAG MARKS PATTERN ON THE DEEP OCEAN FLOOR!



HI, MY NAME IS LILY AND I'M GOING TO SHOW YOU HOW YOU CAN DISCOVER THE **DRAG MARKS PATTERN** ON THE **DEEP OCEAN FLOOR!**



WITH SIMPLE AND FREE TOOLS LIKE **GOOGLE EARTH** AND **GPLATES**, YOU CAN LOAD **NOAA\*1** MAPS AND **POIKE'S** MAPS!



COME WITH US TO EXPLORE THE CHAINS OF MOUNTAINS IN THIS INCREDIBLE **PATTERN** OF THE **DEEP OCEAN FLOOR!**

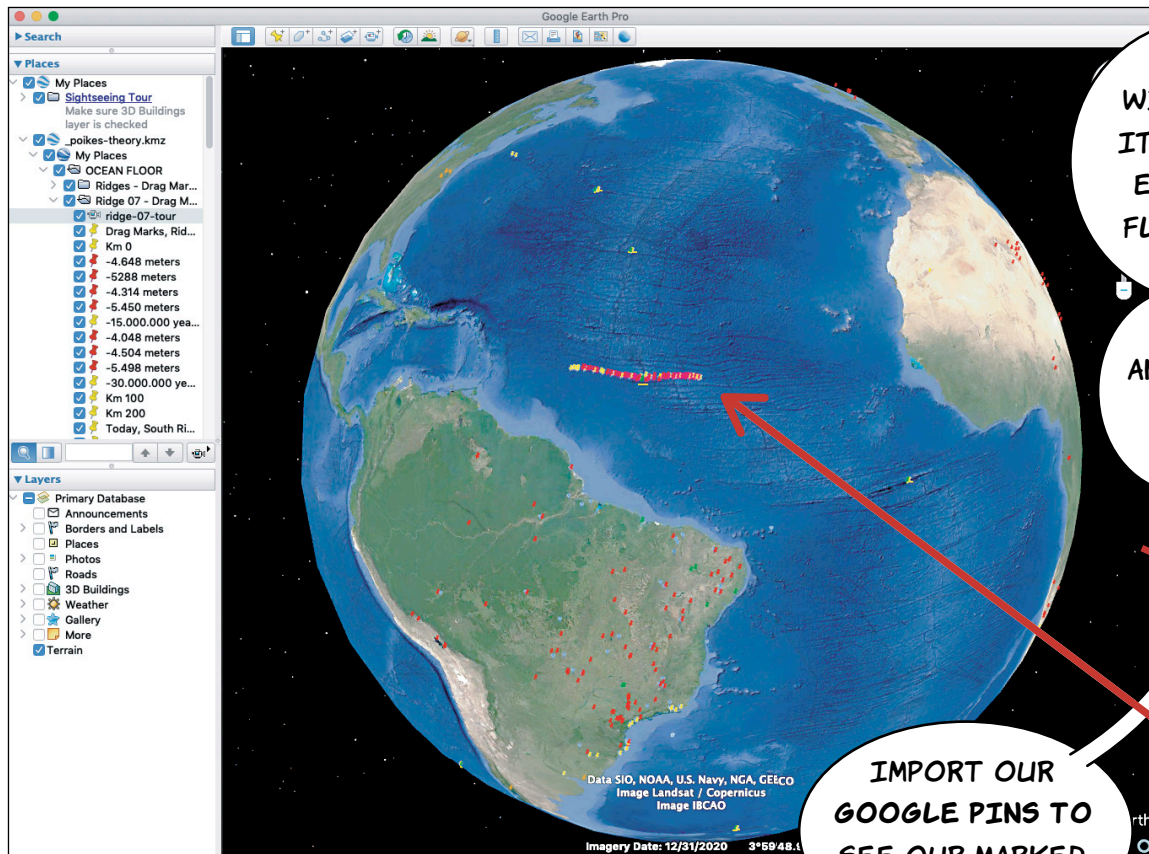
in the **PDF** version, the text with **ASTERISK \*** will have a **Hyperlink** to the **Internet** at the footer.

[www.poikestheory.com.br](http://www.poikestheory.com.br)



\*1 We work the maps downloaded from NOAA (National Oceanic and Atmospheric Administration). <http://www.noaa.gov>





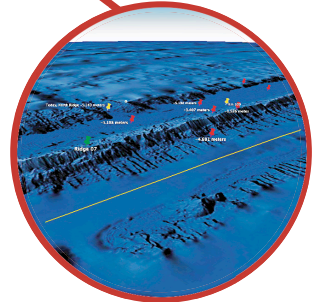
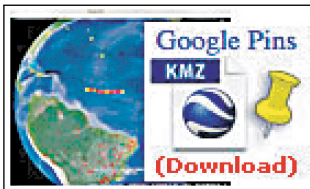
WE CAN START WITH GOOGLE EARTH! IT IS GREAT TOOL TO EXPLORE THE OCEAN FLOOR! HERE IS SOME TIPS!

JUST DOWNLOAD AND INSTALL GOOGLE EARTH TO FOLLOW WITH US!



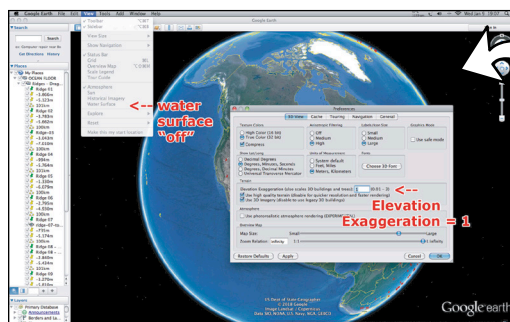
IMPORT OUR GOOGLE PINS TO SEE OUR MARKED RIDGES!

BY DOWNLOADING THE **\_poikes-theory.kmz.zip**\*1 FILE! THEN UNZIP IT AND OPEN WITH YOUR **GOOGLE EARTH!**



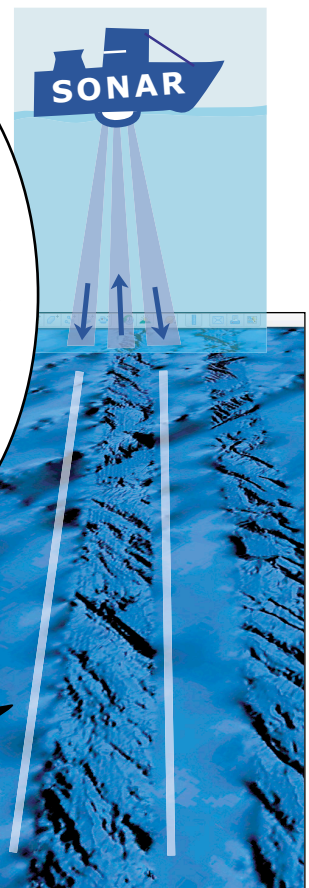
RIDGE 07 PINS

Check our **Boot Camp Online Web Site**\*2 for videos, links and tutorials on Google Earth under **BCO Resources / Google Earth** tab.



ALSO YOU MAY NEED TO CHECK YOUR **GOOGLE EARTH SETTINGS**!\*3 TO SEE THE RIDGES AS WE DO!

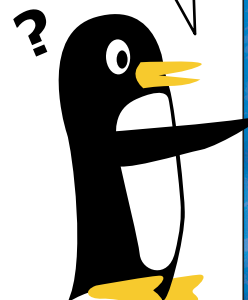
A **CURIOSITY!** THESE RENDERED RANDOM TRACKS ACROSS THE OCEAN FLOOR ARE MADE BY BOATS! MAPPING THE OCEAN FLOOR WITH **SONAR EQUIPMENT!** (BATHYMETRY), THAT'S WHY THEY LOOK SO SHARP!



There is only some **rendered** parts of the ocean floor, but most of it still blurred, **not rendered!** Because is difficult and time consuming to get data from de Deep Ocean Floor,

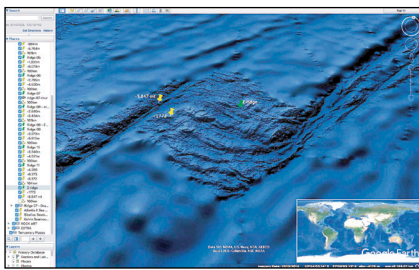


RIDGE 04, 4.7 Km drop.

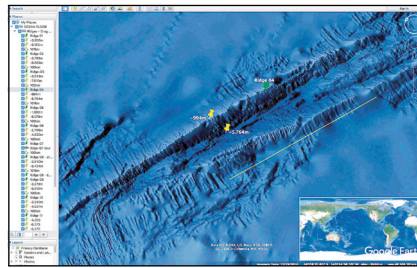


\*1 - KMZ file for Google Earth, direct link to download: [http://www.poikestheory.com.br/\\_kmz/\\_poikes-theory.kmz.zip](http://www.poikestheory.com.br/_kmz/_poikes-theory.kmz.zip)  
 \*2 - Boot Camp Online Web Site. (Publications and Resources) Web Site: <http://www.bootcamp.poikestheory.com.br>  
 \*3 - Google Earth Settings: (our settings) <http://www.poikestheory.com.br/bco/ge-settings.html>

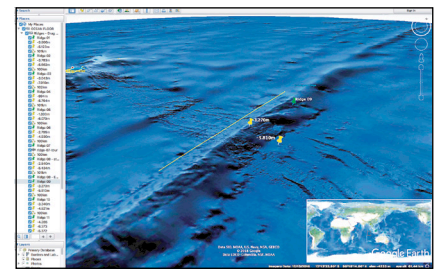




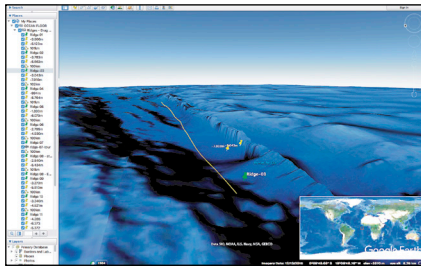
RIDGE Z, 4.1 Km drop.



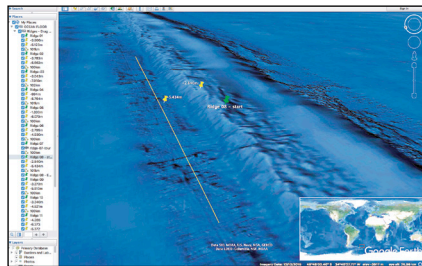
RIDGE 04, 4.7 Km drop.



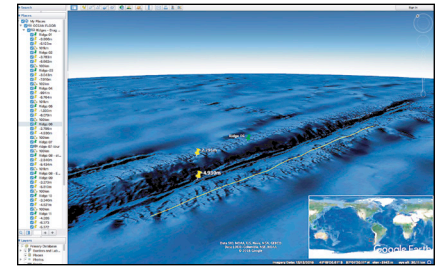
RIDGE 09, 2.5 Km drop.



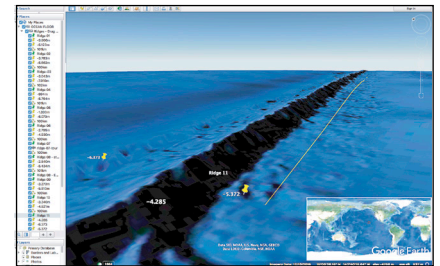
RIDGE 03, 3.9 Km drop.



RIDGE 08, 2.5 Km drop.

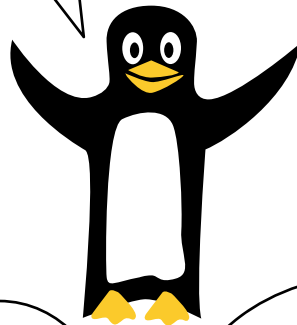


RIDGE 06, 2.1 Km drop.



RIDGE 11, 2 Km drop.

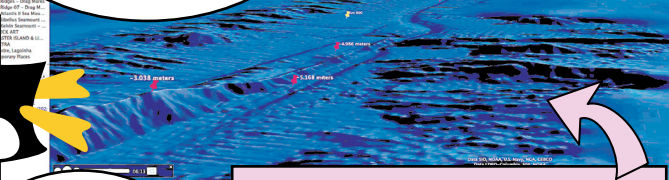
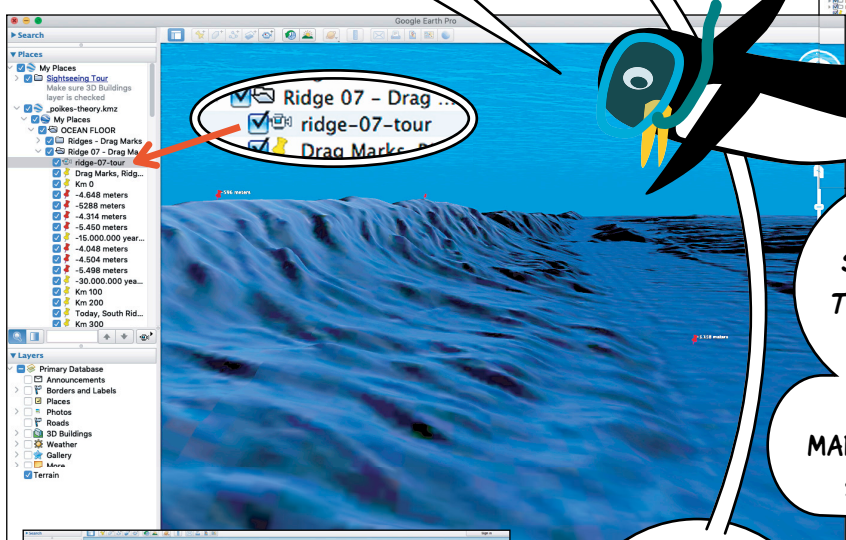
THOSE ARE SOME RIDGES  
WE MARK DOWN FOR YOU TO  
FOLLOW WITH OUR **GOOGLE EARTH**  
**PINS!** OR TO WATCH IT ON YOU  
TUBE: **DEEP OCEAN FLOOR**  
**RIDGES!\***



COME DIVE WITH US! WE FOLLOWED  
**RIDGE 07** FOR A **1000 KM** ON A TOUR!  
PLACING A **GOOGLE PIN** FOR EVERY **100**  
METERS AND MARKING ITS **HIGHS** AND  
**LOWS** ALONG THE WAY!

WILE  
IT CROSS THE **MID**  
**OCEAN RIDGE!** IN  
TWO DISTINCTIVE  
PLACES! **NORTH** AND  
**SOUTH!**

AND SEE IT  
SINKING INTO THE  
SEDIMENT NEAR THE  
**CONTINENTAL**  
**MARGIN!**

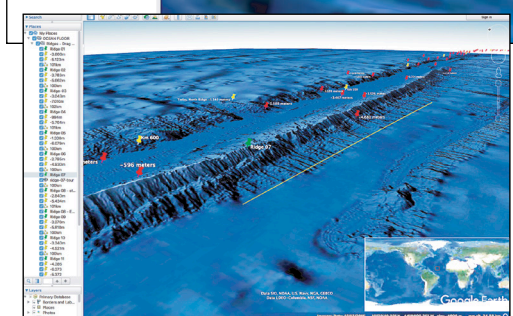
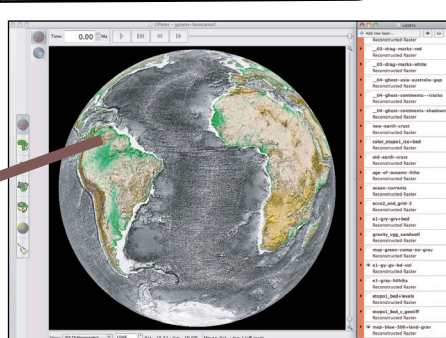


**HEI LILY!**  
**SHOW THEM**  
**THAT WE CAN**  
**SEE MORE!**

you can follow this tour  
with our **Google Pins Tour**  
or whatch on our  
**YouTube! Videos\*5/\*6**

OVERLAYING THE **BATHYMETRIC**  
**MAPS** WITH THE **GRAVITY** MAP REVEALS THE  
**SUBMERGED PARTS** OF THESE **RIDGES!**

**YES**  
**GRANDPA!**  
**I WILL SHOW**  
**THEM IN THE**  
**NEXT**  
**PAGES!**



RIDGE 07, 4.4 Km drop.

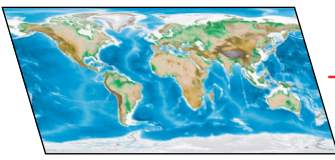
\*4 - You Tube Video Tour: 00a - Deep Ocean Floor Ridges (en-us), <https://youtu.be/TWLxrMioIE8>

\*5 - You Tube Video Tour: Ridge 07 no water, <https://youtu.be/XmAPIFZt8XM>

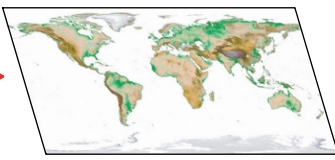
\*6 - You Tube Video Tour: Ridge 07 with water, <https://youtu.be/tKJ5uv2igAI>



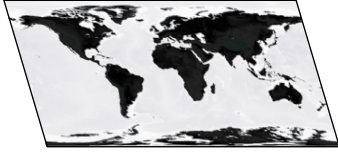
ETOPO 1 COLOR



CONTINENTS ONLY

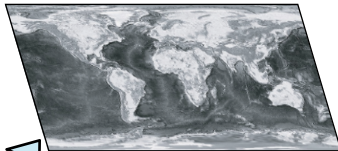
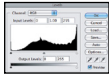


ETOPO 1 BEDROCK



< ORIGINAL

ADJUSTED >

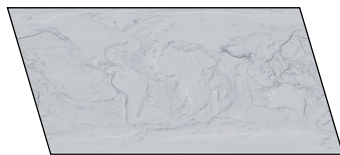


ETOPO 1 BEDROCK

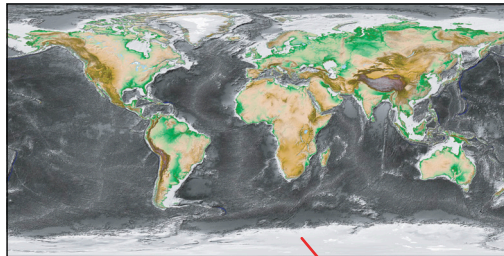
You can see our videos on Etopo1 Bedrock Map being adjusted on How we work our maps\*1.

IT TOOK HIM SOME TIME TO FIGURE OUT HOW TO ADJUST THE SHADOWS ON THE ETOPO1 BEDROCK MAP! BUT IT WAS WORTH IT! THIS PROCESS INCREASED THE RIDGES VISUALIZATION!

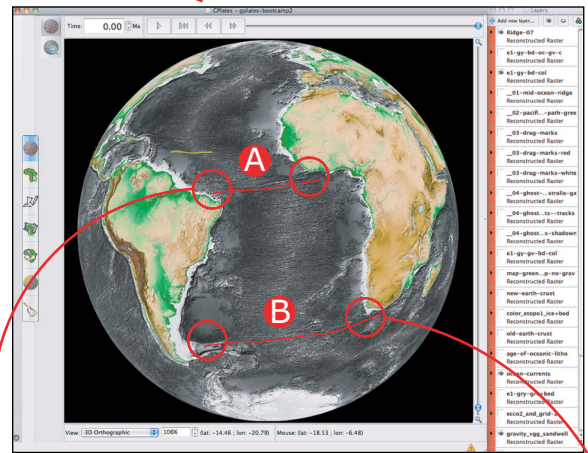
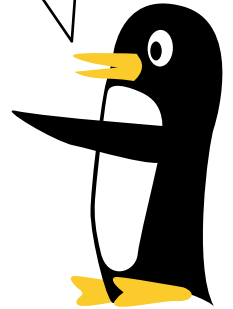
GRAYSCALE HILL SHADE



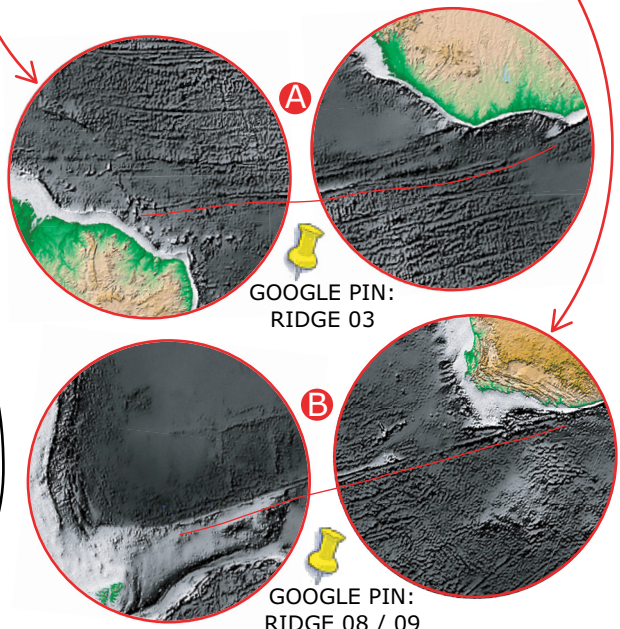
ETOPO 1 COLOR + BEDROCK + HILL SHADE



A LONG TIME AGO! BEFORE I WAS EVEN BORN! GRANDPA POIKE WAS ALREADY WORKING ON THESE MAPS! SINCE THE EARLY 2000S! ADJUSTING AND OVERLAYING THEM! LOOKING FOR A BETTER VIEW OF THE DEEP OCEAN FLOOR!



NO GRAVITY MAP OVERLAY

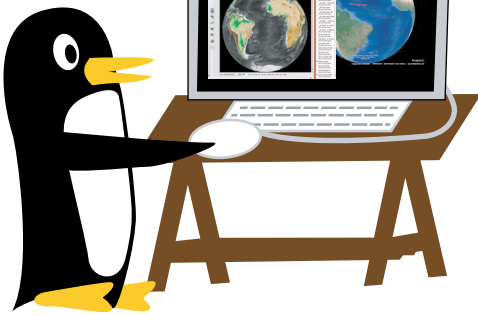


GOOGLE PIN: RIDGE 03

GOOGLE PIN: RIDGE 08 / 09

ON THIS COMPOSITE MAP YOU ALREADY CAN SEE SOME OF MANY INTERCONTINENTAL RIDGES! AND WE HAVE A NICE COLLECTION OF MAPS FOR DOWNLOAD AT OUR WEB PAGE! POIKE'S THEORY, EARTH MAPS\*2

AN IMPORTANT TOOL! GPLATES! WITH GPLATES INSTALLED YOU CAN LOAD OUR MAPS AND LAYERS ONTO THE GLOBE FOR VISUAL ANALYSIS! COMPARE IT WITH GOOGLE EARTH! AND PLAY THE PALEOMAP TIMELINE!

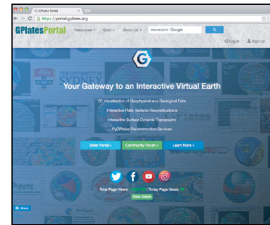


**Our Tutorials for GPlates\*3**  
we'll focus on how to use GPlates as a Visual Interface, showing how to load maps and layers into the globe, and play the Paleomap Timeline for visual analysis. GPlates advanced features like python programming won't be covered, for that you can look at Earth Byte Web Site and GPlates Portal.

EarthByte Web Site\*3



GPlates Portal\*3



GPlates Download\*3



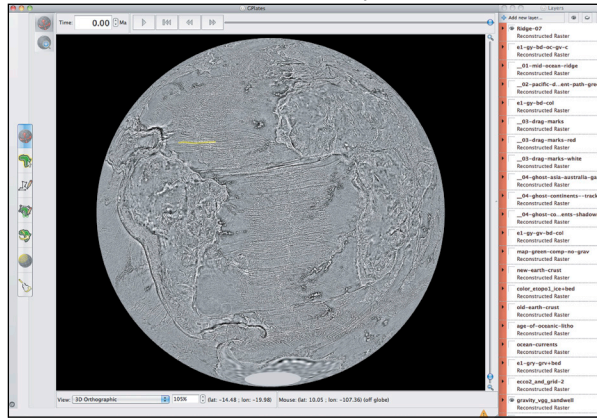
\*1 - How we work our maps (videos) <http://www.poikestheory.com.br/bco/how-to-maps.html>  
\*2 - Poike's Theory Earth Maps (our maps collection) [http://www.poikestheory.com.br/\\_earth-maps.html](http://www.poikestheory.com.br/_earth-maps.html)  
\*3 - Gplates (links, tutorials and videos) <http://www.poikestheory.com.br/bco/earthbyte-gplates.html>



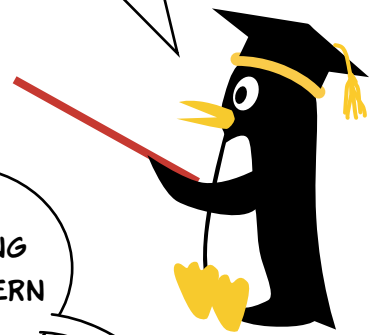


< Improved Gravity Map Reveals New Mountains Under the Sea.\*<sup>1</sup>

Gravity VGG Sandwell Smith

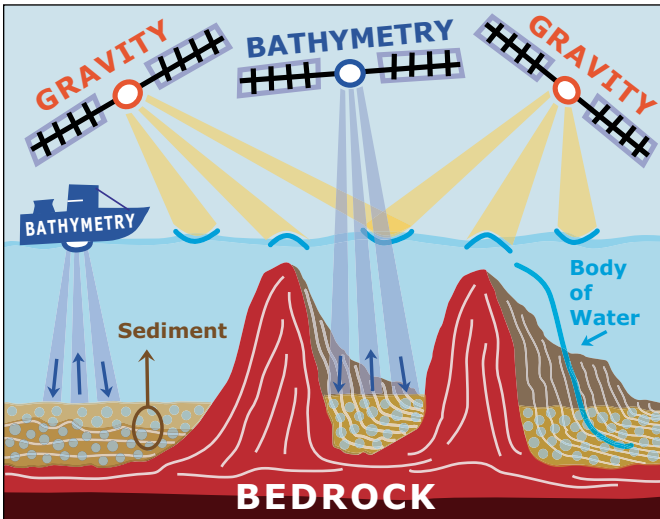
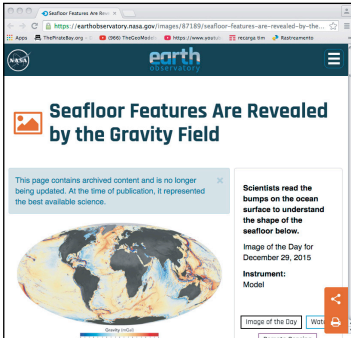


SO THE ACADEMICS  
DR. SANDWELL\*<sup>2</sup>, DR. SMITH\*<sup>3</sup>  
AND THEIR COLLEAGUES  
IMPROVE THE GRAVITY MAP!  
GIVING US A LOT MORE  
DETAIL IN TO THE DEEP  
OCEAN FLOOR!



SHOWING MORE DETAILS OF THE  
BEDROCK UNDER THE SEDIMENT! REVEALING  
AN INCREDIBLE INTERCONTINENTAL PATTERN  
OF MOUNTAIN RANGES!

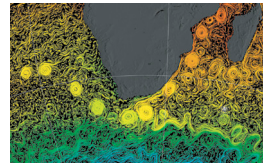
Seafloor features are Revealed  
by the Gravity Field.\*<sup>4</sup>



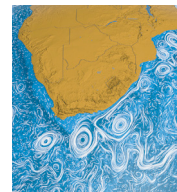
**Bathymetry** (Sonar) focuses on the  
topography of the Ocean Floor.

**Gravity** explores the subsurface structure  
based on gravitational variations.

Oceanic currents work  
the body of water, and  
the gravity mapping  
measure with precision  
the surface, since the  
water is incompressible,



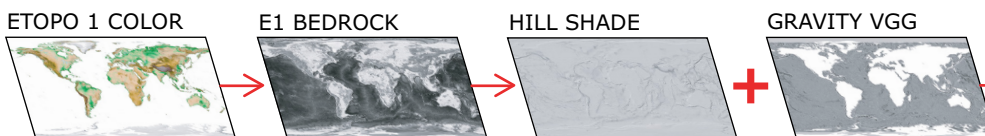
**Sample:** South Africa  
Oceanic Currents.



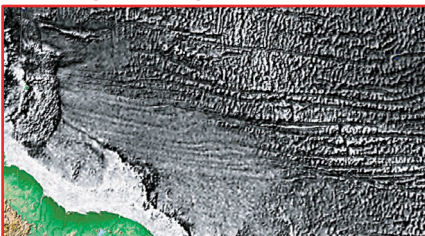
tiny bumps on  
the sea surface  
are compared  
and combined  
with previous  
gravity  
measurements.

WITH THE NEW  
GRAVITY MAP!  
OUR COMPOSITE  
NOW SHOW THAT  
THE BEDROCK  
CONTINUES ALL  
THE WAY TO THE  
CONTINENTAL  
EDGES!

NOW  
WE CAN SEE MORE  
OF THIS PATTERN!  
ALL OVER THE DEEP  
OCEAN FLOOR!



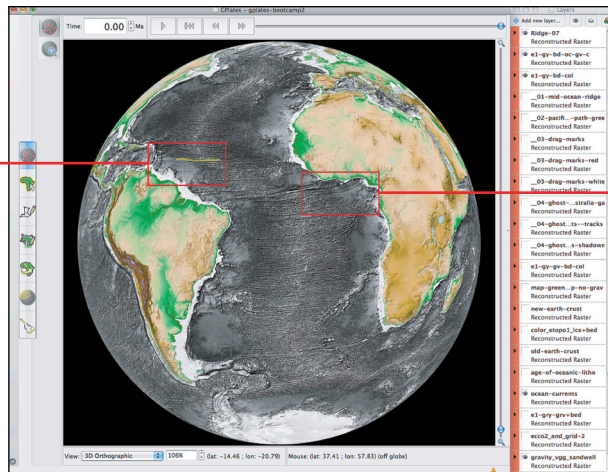
**AFTER GRAVITY OVERLAY**



**BEFORE GRAVITY OVERLAY**

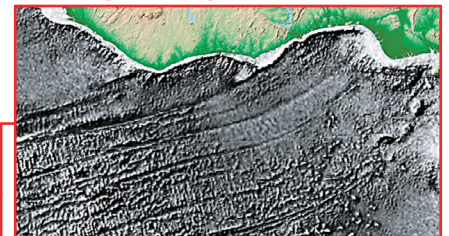


**ETOPO 1 COLOR + BEDROCK + HILL SHADE + GRAVITY**

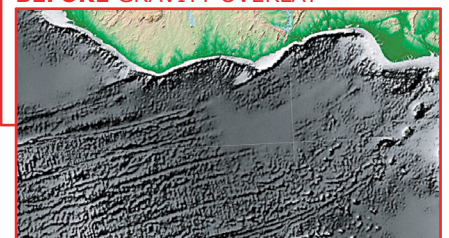


**WITH GRAVITY MAP OVERLAY**

**AFTER GRAVITY OVERLAY**

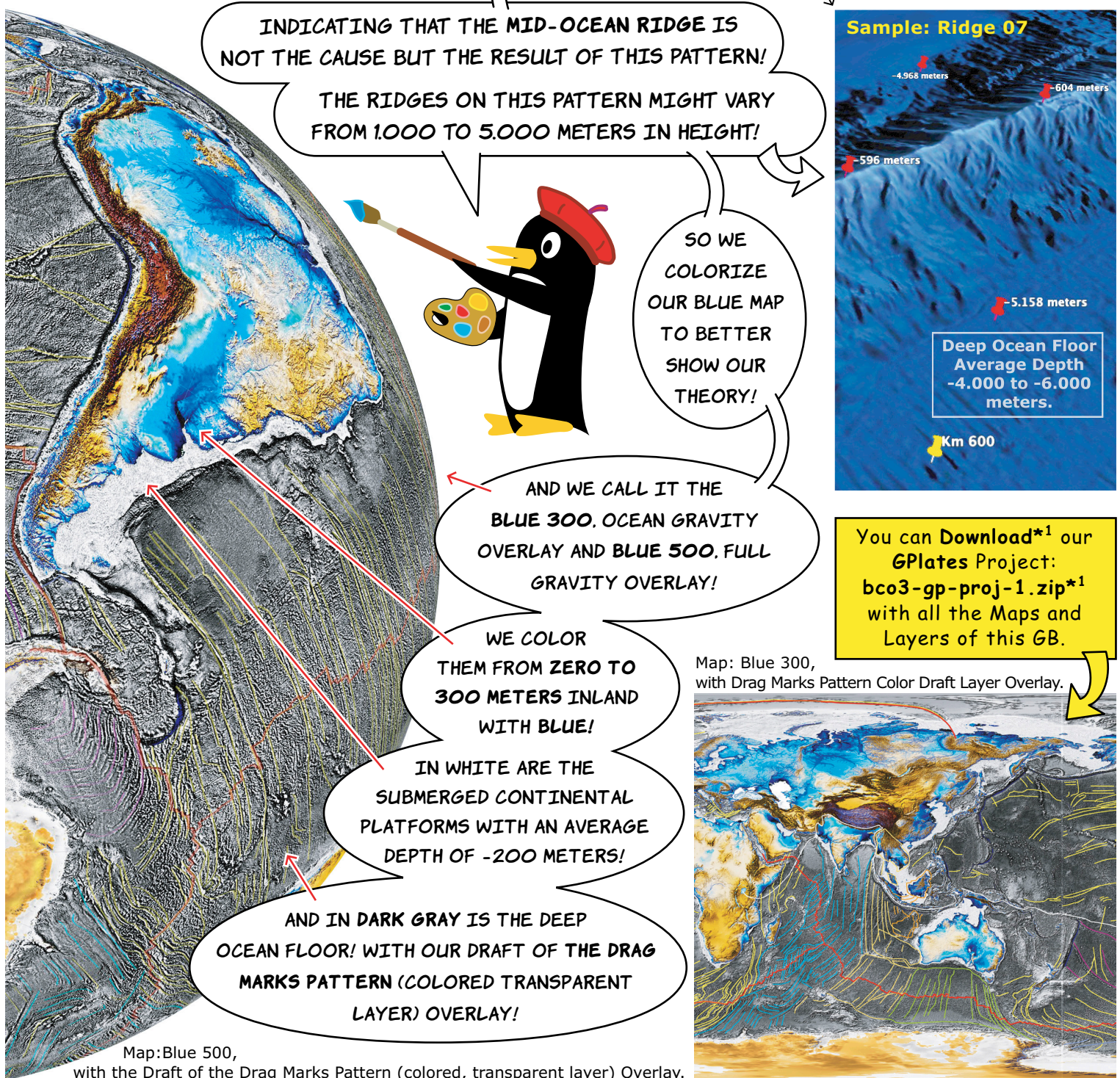
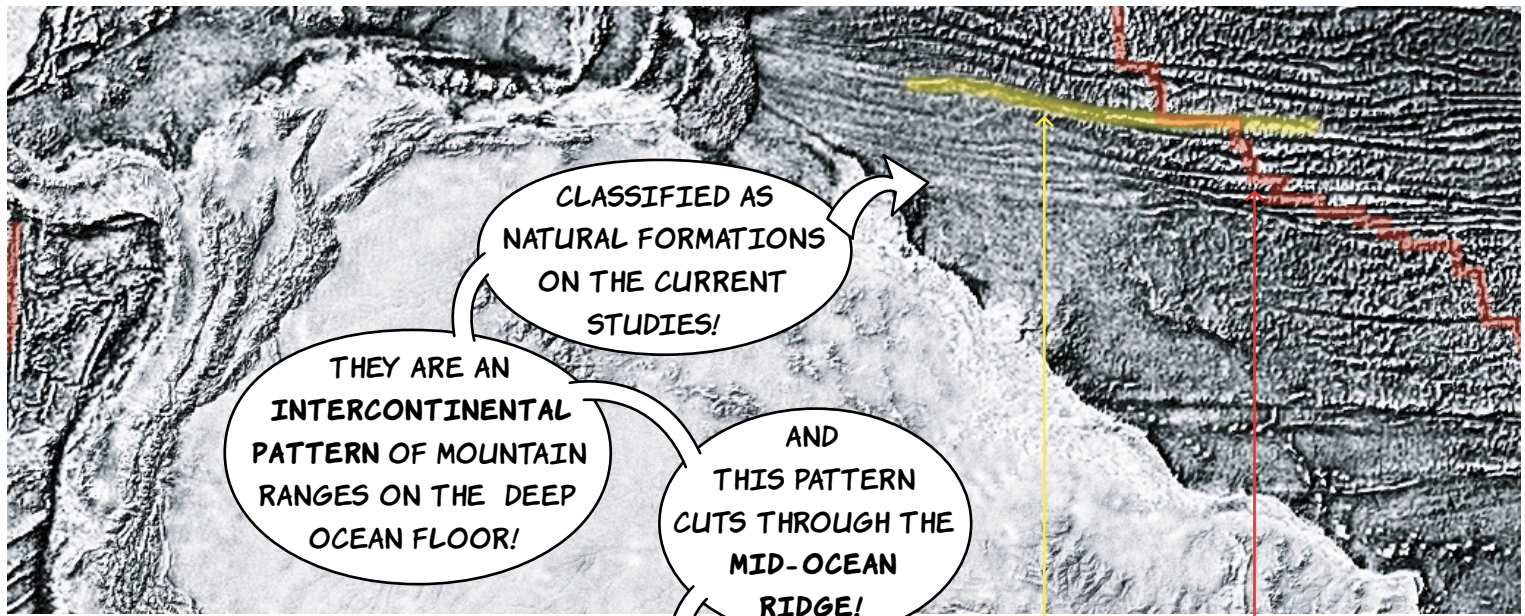


**BEFORE GRAVITY OVERLAY**



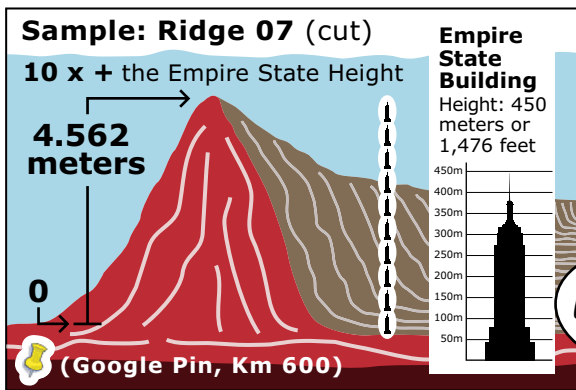
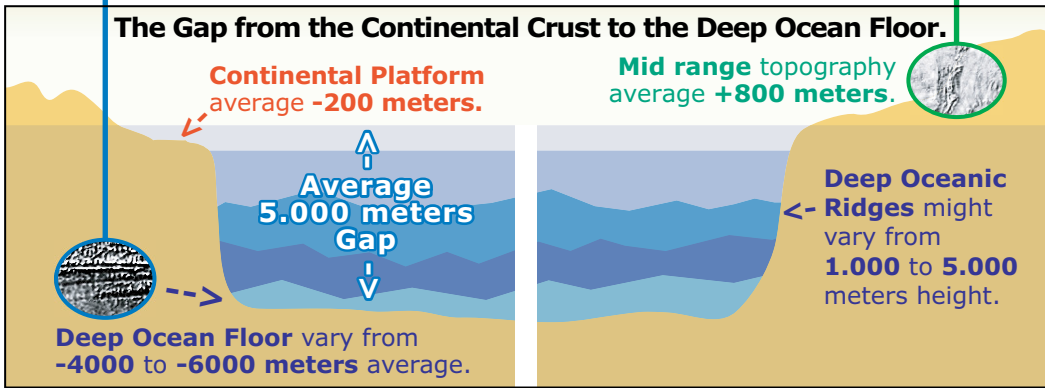
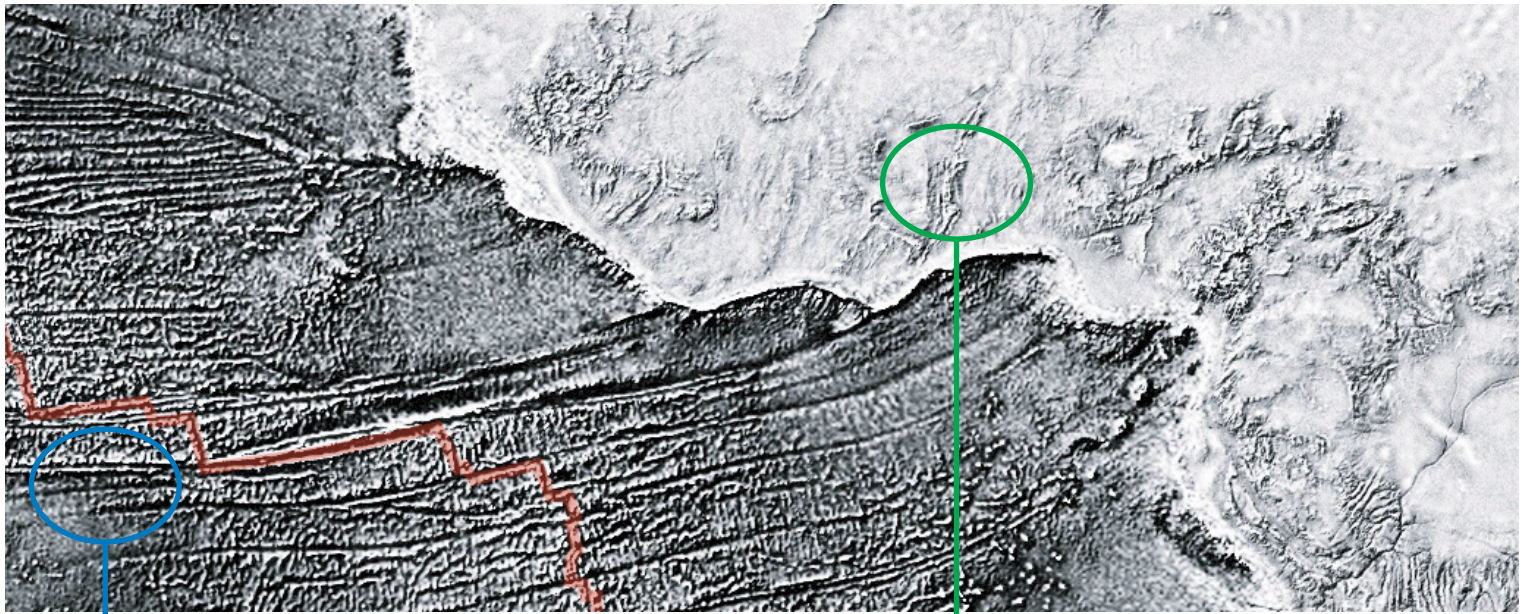
- \*<sup>1</sup> - Improved Gravity Map Reveals New Mountains Under the Sea. <http://www.poikestheory.com.br/bco/n-improved-gravity.html>
- \*<sup>2</sup> - Dr. David Sandwell of the Scripps Institution of Oceanography. <http://www.poikestheory.com.br/bco/dr-sandwell.html>
- \*<sup>3</sup> - Dr. Walter Smith of the National Oceanic and Atmospheric Administration. <http://www.poikestheory.com.br/bco/dr-smith.html>
- \*<sup>4</sup> - Seafloor features are Revealed by the Gravity Field. <http://www.poikestheory.com.br/bco/n-seafloor-features.html>





You can Download\*1 our GPlates Project: bco3-gp-proj-1.zip\*1 with all the Maps and Layers of this GB.





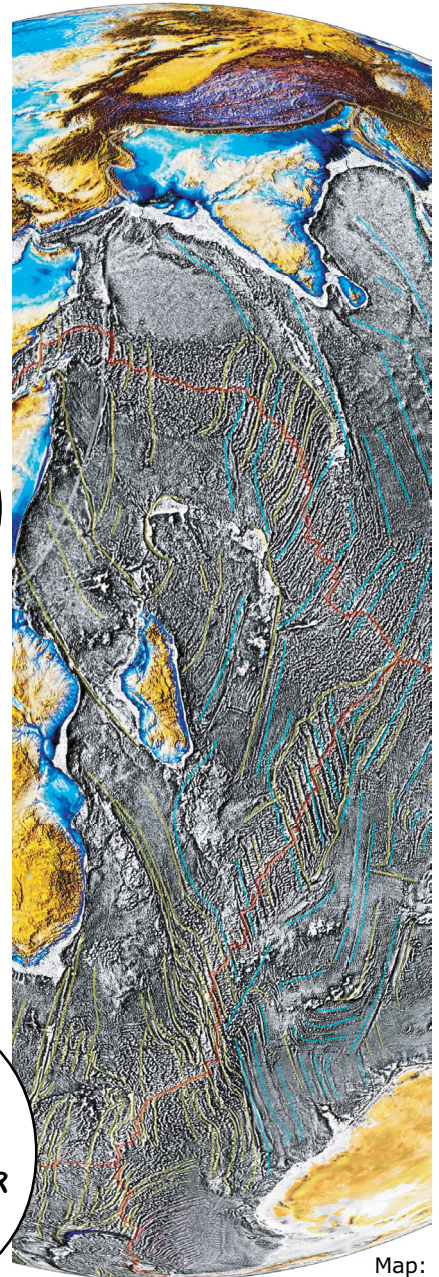
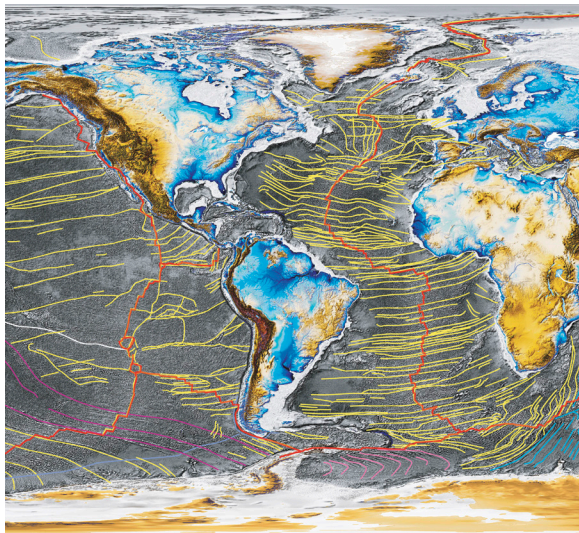
WE ARE GOING TO SHOW HOW THE STUDY OF THIS PATTERN ALLOW US TO BACKTRACK THE CONTINENTAL DRIFT!

SO LET'S INSPECT IT!



AND YOU CAN VIEW OR DOWNLOAD OUR BLUE MAP\*2 ONLINE WITH OR WITHOUT THE DRAG MARKS PATTERN LAYER AT OUR EARTH MAPS WEB PAGE!\*2

TO HELP US, GRANDPA POIKE DRAW THIS DRAFT OF THE DRAG MARKS PATTERN! IN COLOR AND A VERSION IN A SEE THROUGH LAYER!

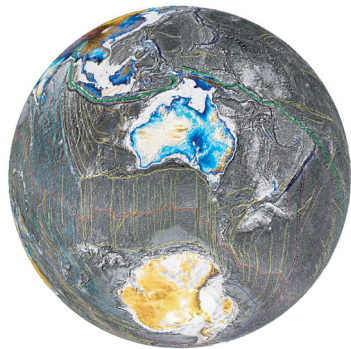


Map:  
Blue 500  
w/ Transparent  
Color Drag Marks  
Pattern Layer  
Overlay

**THIS APPROACH WILL UNLEASH A NEW PERSPECTIVE ON THE HISTORY OF THE PLANET! AND THERE IS MUCH MORE... TO BE CONTINUED....**

\*2 - View or download the Blue Map 300/500 [http://www.poikestheory.com.br/\\_earth-maps.html#blue-map-300-500](http://www.poikestheory.com.br/_earth-maps.html#blue-map-300-500)

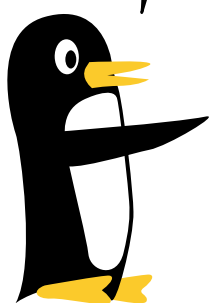
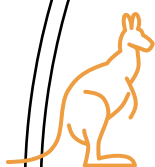




STARTING WITH  
AUSTRALIA AND  
ANTARCTICA!

YOU  
CAN SEE HOW  
AUSTRALIA GOES UP  
NORTH! CRASHING IN  
TO THIS THICK GREEN  
LINE THAT WE REFER AS  
THE RESIDUE OF THE  
PACIFIC DROP  
PATHWAY!

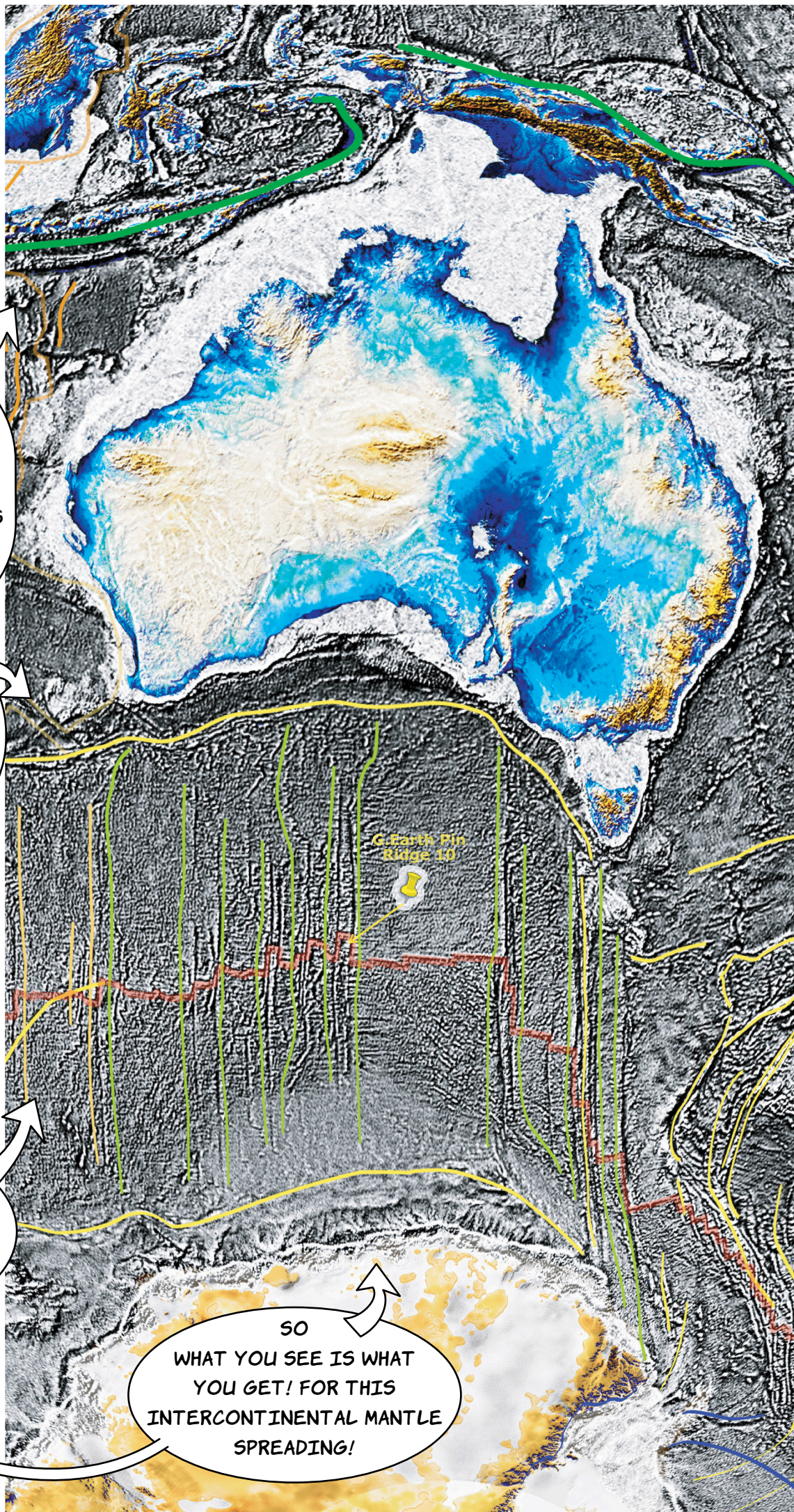
AND  
THE LIGHTER  
GREEN LINES SKETCH  
HIGHLIGHTS THE DRAG  
MARKS PATTERN OF  
THIS CONTINENTAL  
DRIFT!



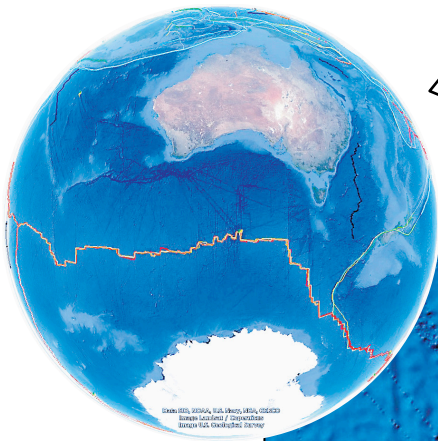
HERE  
AT THE CENTER IN  
RED! THE MID OCEAN  
RIDGE BEING CROSSED  
BY THIS PATTERN!

AND  
THERE IS NO  
SUBDUCTION! THE  
MARGINS BETWEEN  
ANTARCTICA AND  
AUSTRALIA ARE  
PASSIVE!

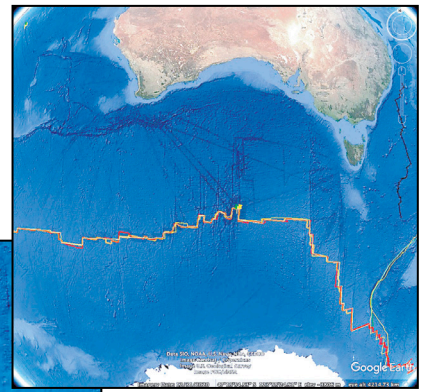
SO  
WHAT YOU SEE IS WHAT  
YOU GET! FOR THIS  
INTERCONTINENTAL MANTLE  
SPREADING!





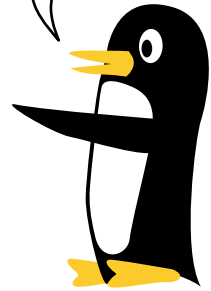


ON GOOGLE EARTH WE  
USE THE KML FILE: PLATE  
BOUNDARIES\*1 FROM EARTHREF.ORG!  
DOWNLOAD AND OPEN THE KML\*1  
FILE TO SEE THE MID OCEAN  
RIDGE LAYER !

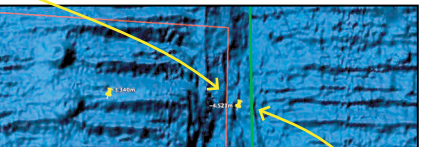
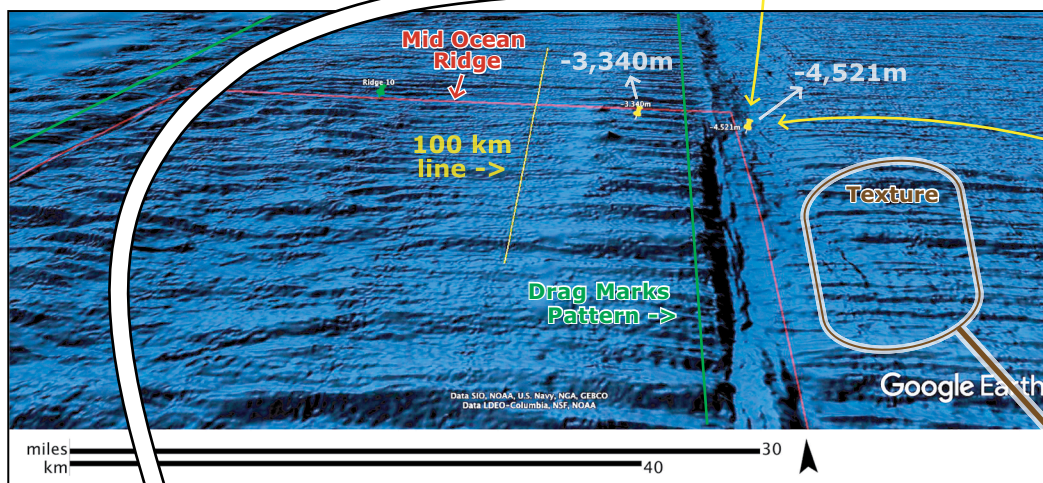


WITH THE "SPREADING RIDGES"  
LAYER ON! YOU CAN SEE THE MID  
OCEANIC RIDGE IN RED!

**Note:** The  
Green line  
Highlight the  
direction of  
The Drag  
Marks Pattern  
on the Deep  
Ocean Floor!



AND YOU CAN SEE  
HOW THE DRAG MARKS  
PATTERN CROSS FREELY  
THROUGHT THE THE MID  
OCEANIC RIDGE! WE  
HIGHLIGHTED IT IN  
GREEN!



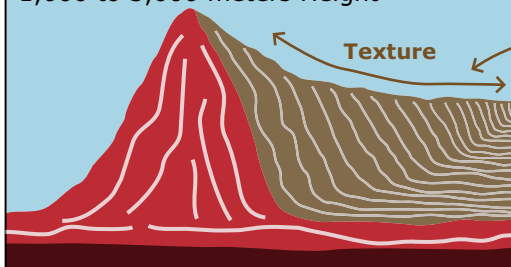
AND THERE IS THE  
TEXTURE THAT GOES  
ALONG THIS SPREADING  
OF THE MANTLE!

AND THE DRAG MARKS PATTERN  
VARY FROM POSITIVE (MOUNTAIN  
RANGES) TO NEGATIVE (TRENCHES)

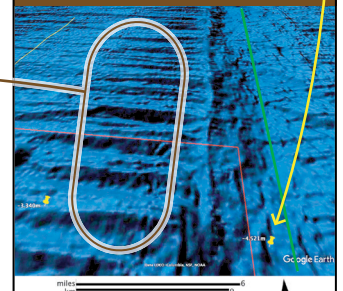
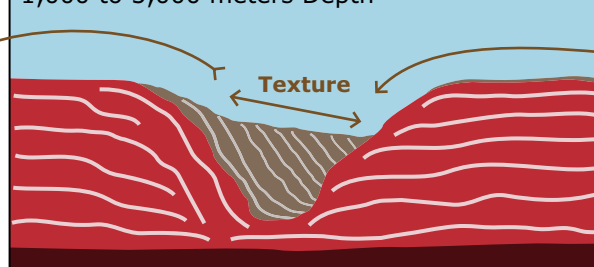
MEASURING FROM  
1,000 TO 5,000 METERS  
IN HEIGHT OR DEPTH!

**TEXTURE** is how we  
call the ripples on the  
terrain that vary  
between **100 to 500  
meters** up or down on  
the terrain.

Positive Pattern (Mountain Ranges)  
1,000 to 5,000 meters Height



Negative Pattern (Trenches)  
1,000 to 5,000 meters Depth





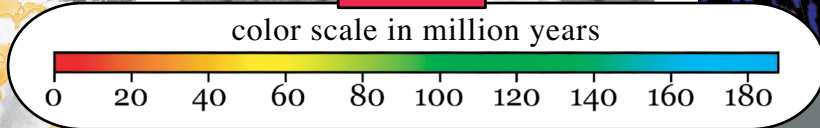
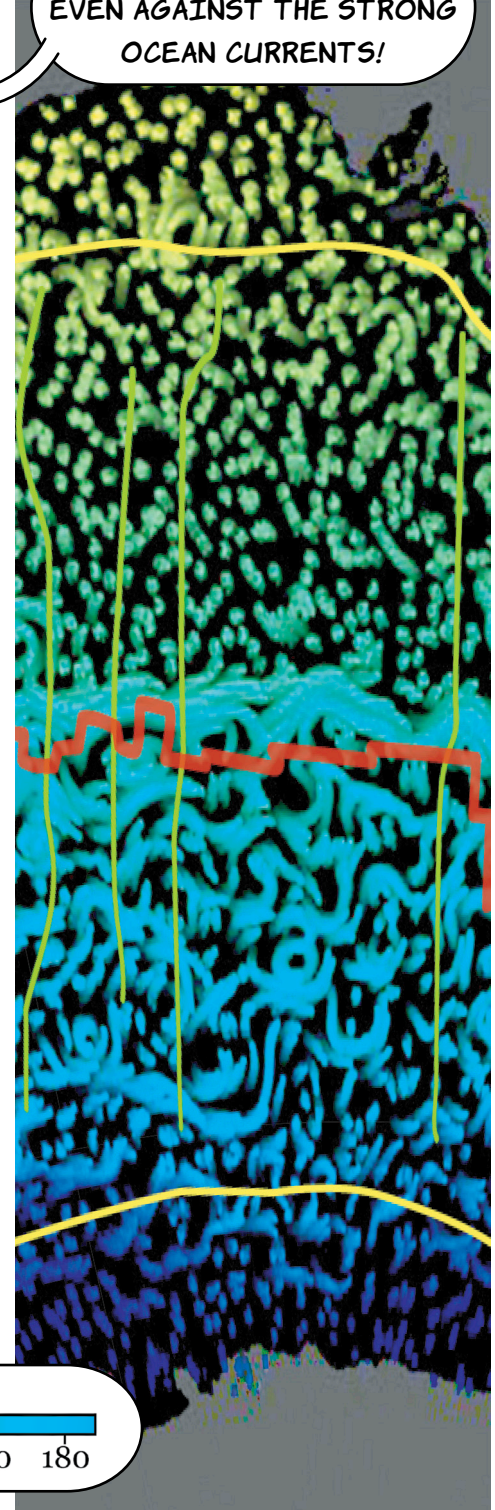
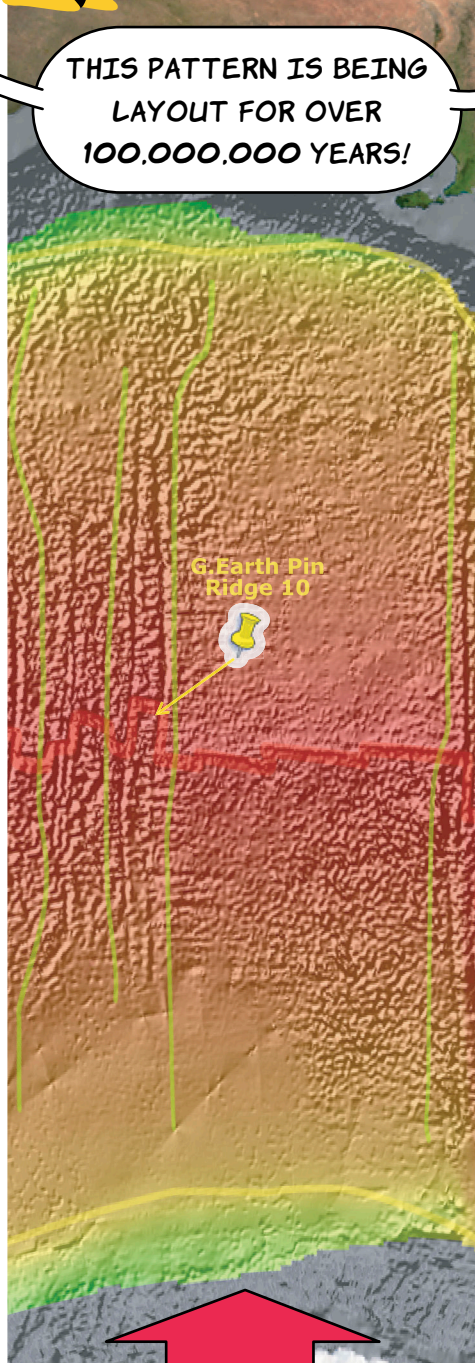
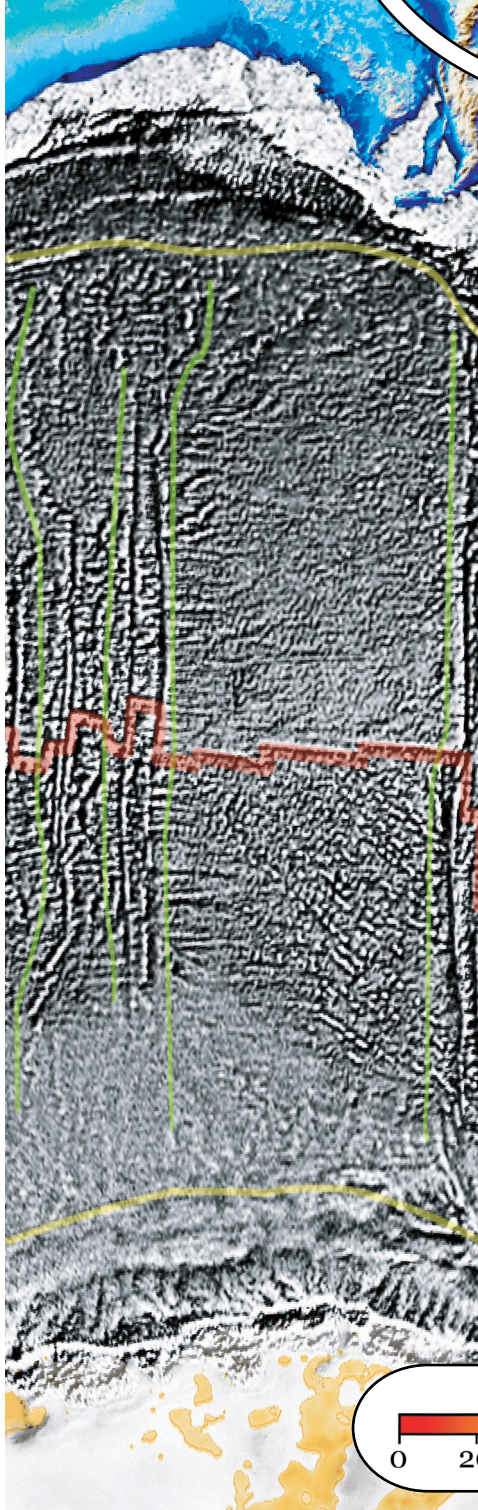
WITH A CLOSER  
LOOK YOU CAN  
COMPARE THIS PATTERN.  
AGAINST ITS AGE AND  
THE OCEANIC  
CURRENTS!



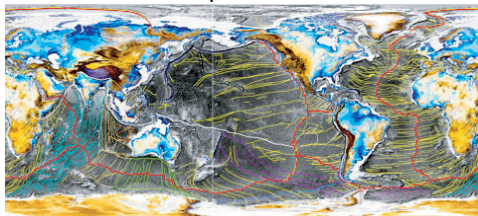
WE  
WILL SHOW MANY  
OTHER EXAMPLES OF THIS  
PATTERN AROUND THE  
PLANET! FOLLOW  
WITH US!

AND IT IS CONSISTENT  
EVEN AGAINST THE STRONG  
OCEAN CURRENTS!

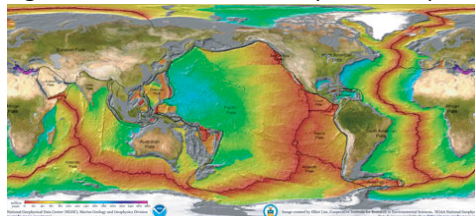
THIS PATTERN IS BEING  
LAYOUT FOR OVER  
100,000,000 YEARS!



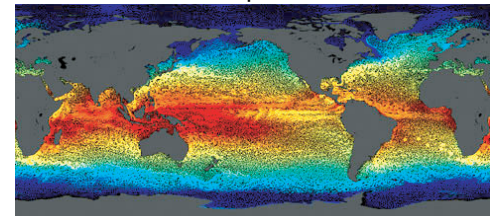
Our Blue 500 Map\*<sup>1</sup>



Age of the Oceanic Lithosphere Map\*<sup>1</sup>



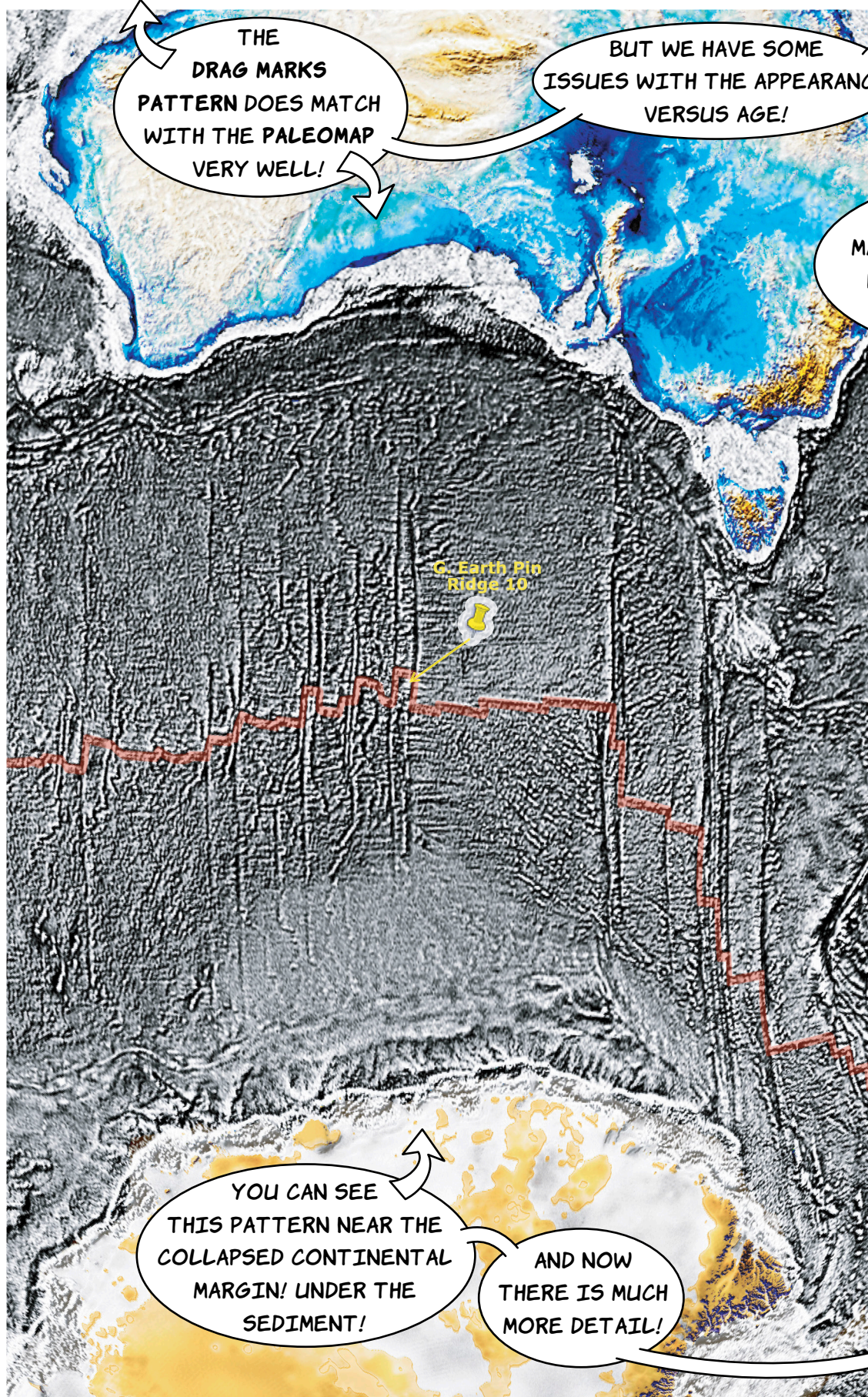
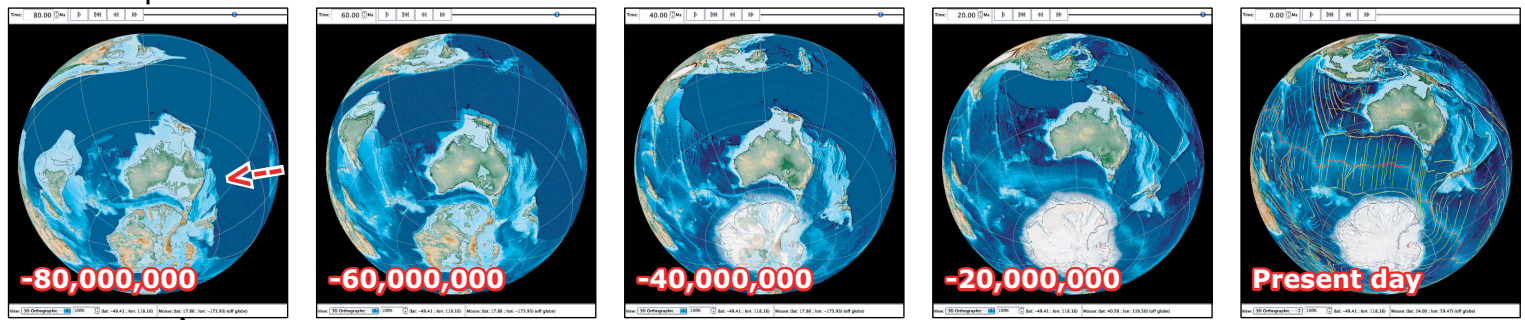
Ocean Currents Map\*<sup>1</sup>



\*1 - All of this Maps available at PoikesTheory.com.br / Earth Maps: [http://www.poikestheory.com.br/\\_earth-maps.html](http://www.poikestheory.com.br/_earth-maps.html)



# Paleomap frames in Million Years



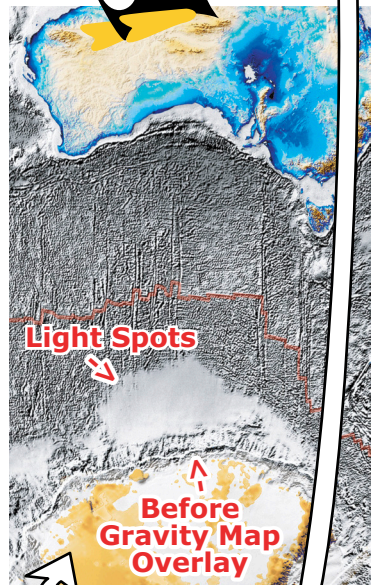
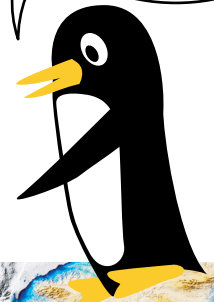
THE  
DRAG MARKS  
PATTERN DOES MATCH  
WITH THE PALEOMAP  
VERY WELL!

BUT WE HAVE SOME  
ISSUES WITH THE APPEARANCE  
VERSUS AGE!

AND  
HOW IT CROSS  
FREELY THROUGH THE  
MID OCEANIC  
RIDGE!

WITH THE GRAVITY  
MAP YOU CAN REALLY SEE  
HOW THIS PATTERN IS  
INTERCONTINENTAL!

THE LIGHT SPOTS  
ON THE MAP ARE ONLY  
REVEALED BY THE  
GRAVITY MAP  
OVERLAY!

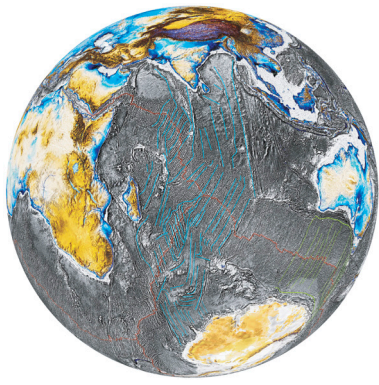


YOU CAN SEE  
THIS PATTERN NEAR THE  
COLLAPSED CONTINENTAL  
MARGIN! UNDER THE  
SEDIMENT!

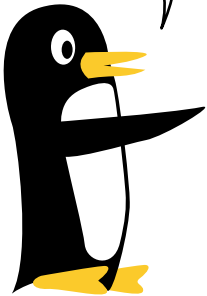
AND NOW  
THERE IS MUCH  
MORE DETAIL!

WE ARE  
BEING LOOKING  
AT THIS PATTERN  
LONG BEFORE THE  
GRAVITY MAP  
IMPROVEMENTS!



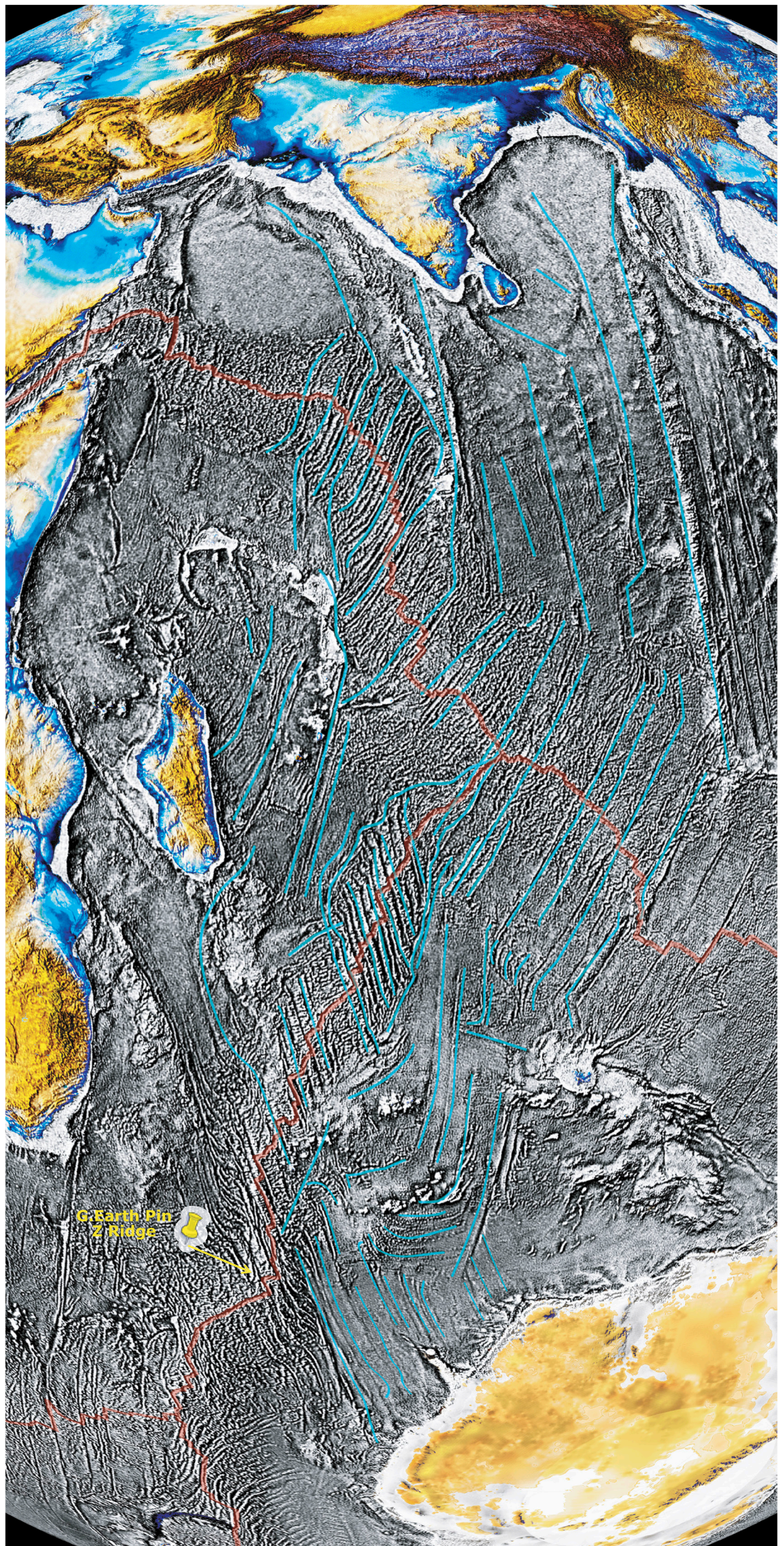
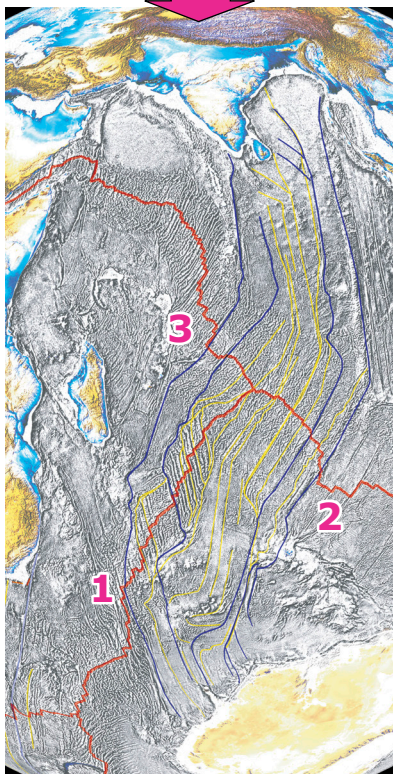


NOW  
ASIA! IT CAN BE  
BACKTRACKED WITH  
THE DRAG MARKS PATTERN  
ALL THE WAY FROM  
ANTARCTICA!

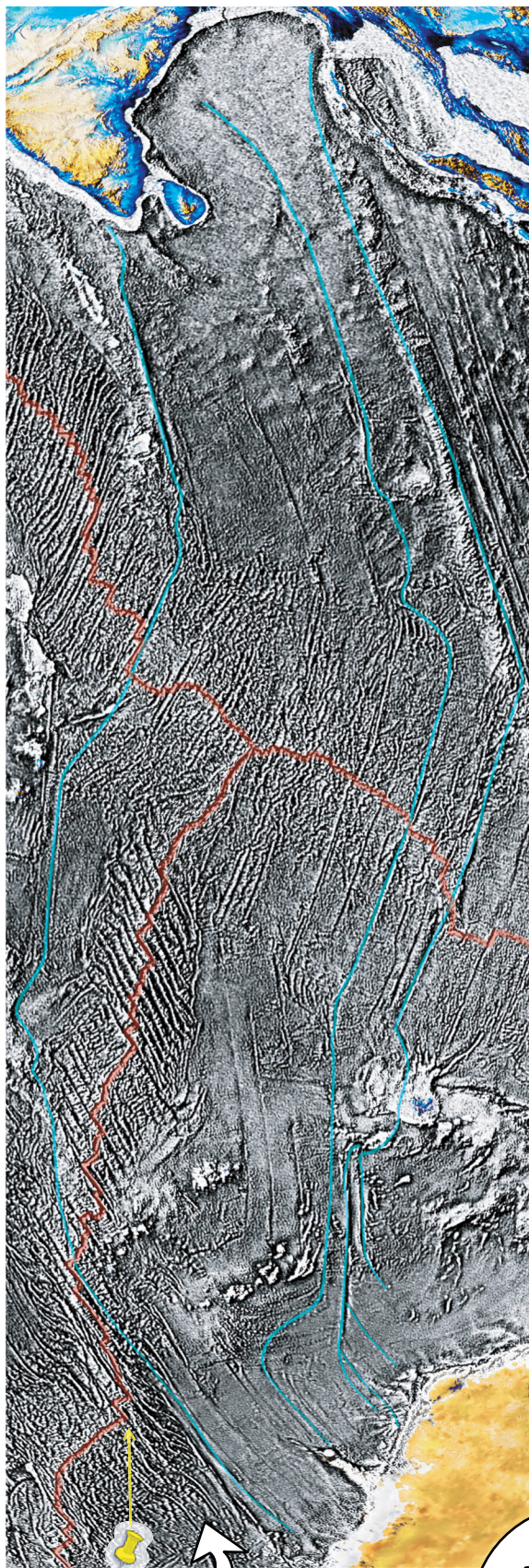


AND THE  
PATTERN CUT ACROSS  
THE MID-OCEAN RIDGE  
ON THREE DIFFERENT  
SEGMENTS!

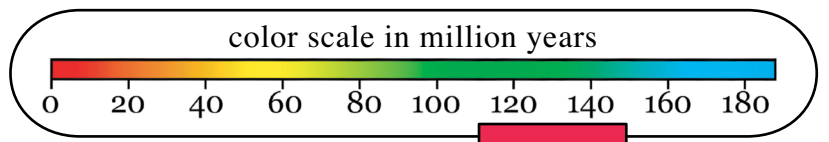
Numbers in Pink for  
the crossing points



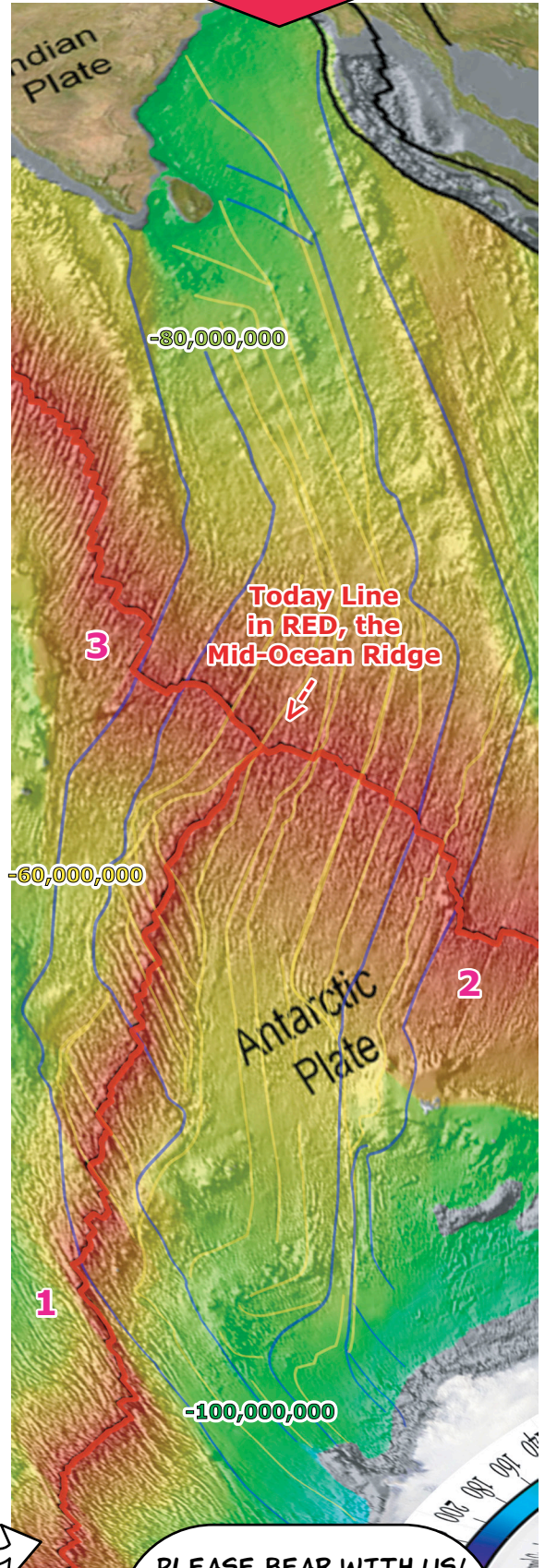
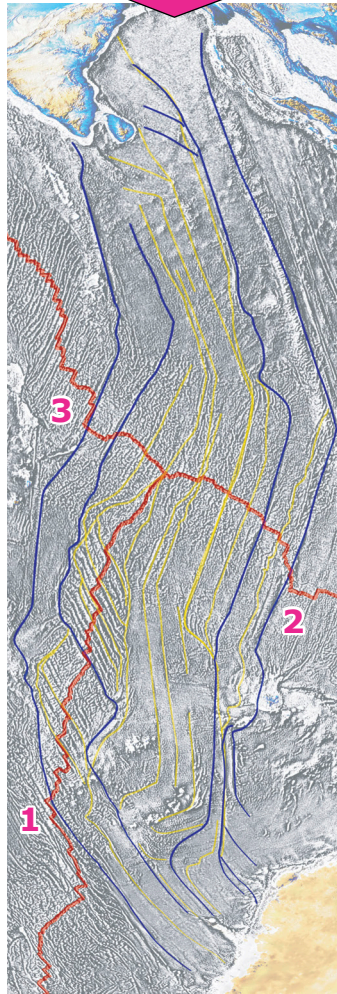




G.Earth Pin  
Z Ridge



Numbers in Pink for  
the crossing points



Today Line  
in RED, the  
Mid-Ocean Ridge



WHAT IS ODD  
TO SEE HERE IS HOW  
THE PATTERN CUT ACROSS  
THE MID-OCEAN RIDGE!  
(THE RED LINE)

CROSSING THE MID-  
OCEAN RIDGE WITH VERY  
MODEST VARIATION!

ON 3 DIFFERENT  
SEGMENTS OF THE  
MID-OCEANIC RIDGE  
WHICH IS SUPPOSED TO  
BE THE SOURCE OF  
THE SPREADING!

LOOKING AT THIS PATTERN IS  
REALLY DIFFICULT TO IMAGINE THE  
MID-OCEAN RIDGE SPREADING THE SAME  
PATTERN BOOT WAYS! FOR THOUSANDS OF  
KILOMETERS! IN TENS OF MILLIONS  
YEARS! IN SUCH A COHERENT WAY!

PLEASE BEAR WITH US!  
WHILE WE SHOW YOU A  
FEW MORE SAMPLES TO  
INVESTIGATE!

AND THEN WE  
WILL DISCLOSURE HOW  
WE SEE THIS EVENT!

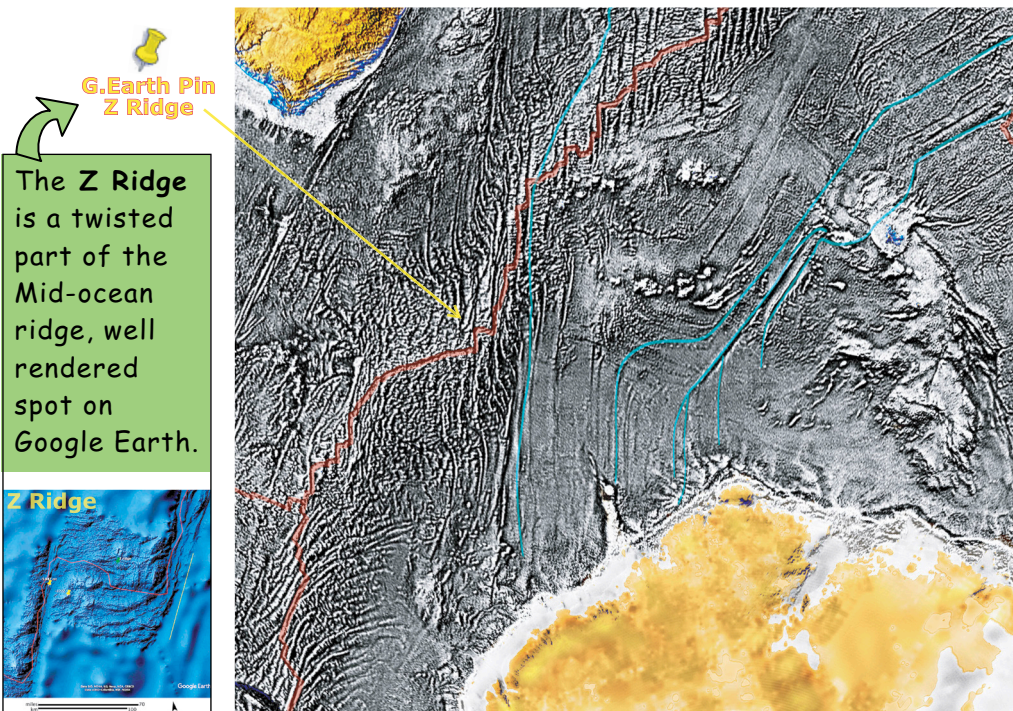
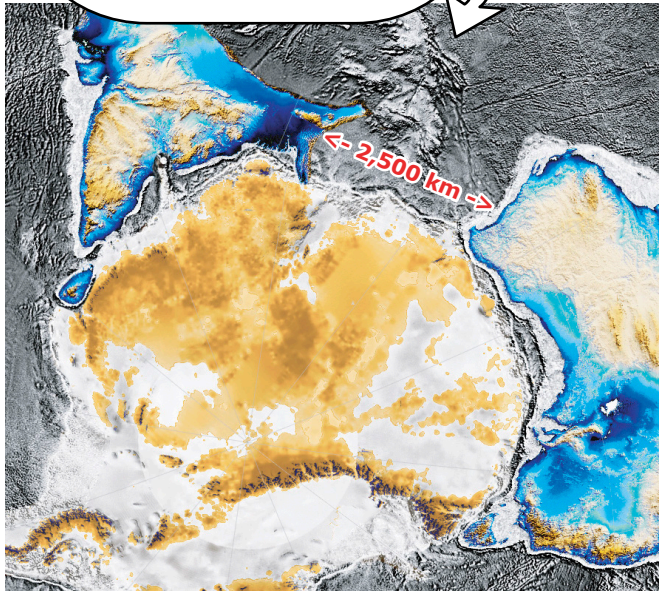
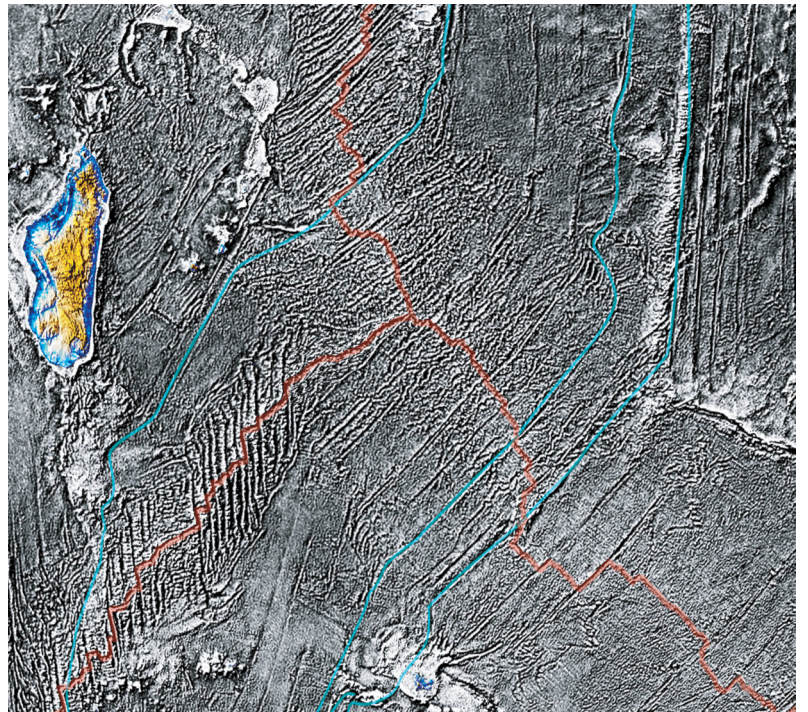
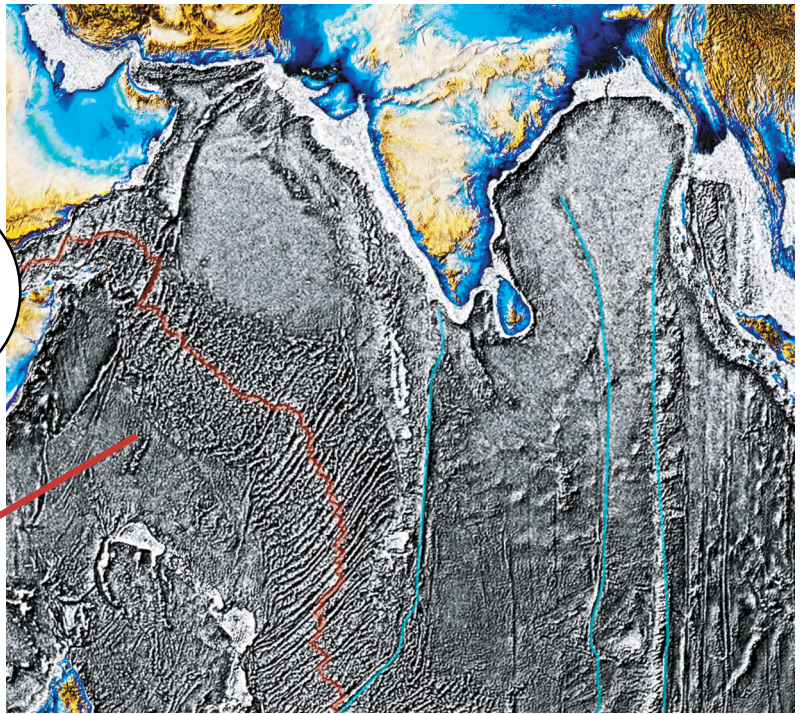
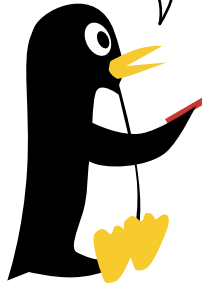


ON THIS CLOSE UPS SHOTS YOU CAN SEE BETTER HOW THIS PATTERN CAN BE BACKTRACKED TO ITS ORIGINS ON ANTARCTICA!

IT WILL GIVE US A VERY NICE GUIDE TO THE DRIFT OF ASIA, FROM ITS DEPARTURE PLACE IN ANTARCTICA ALL THE WAY TO IT'S CURRENT PLACE!

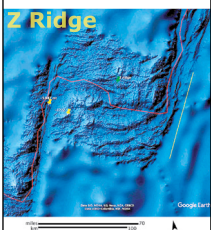
FOLLOW THIS PATTERN AND SEE THE EXACT FITTINGS FOR ASIA CONTINENTAL BORDERS BACK ON ANTARCTICA!

NOW IF YOU DO THE SAME BACKTRACKING WITH AUSTRALIA YOU WILL NOTICE A 2,500 KILOMETERS WIDE GAP BETWEEN THE TWO CONTINENTS!

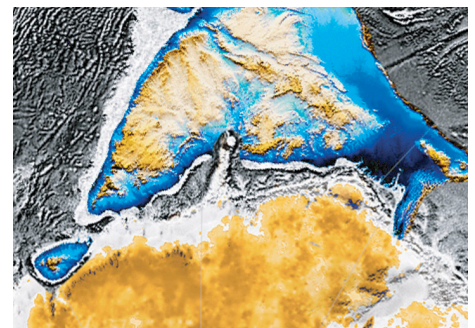
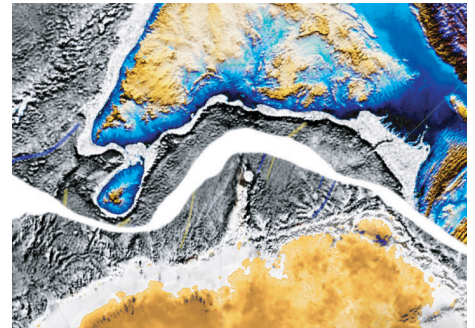


G. Earth Pin  
Z Ridge

The Z Ridge is a twisted part of the Mid-ocean ridge, well rendered spot on Google Earth.



*Asia and Antarctica profiles.*





THIS 2,500 KILOMETERS WIDE GAP  
CAN BE TRACKED FROM ANTARCTICA ALL THE  
WAY TO THE NORTHERN HEMISPHERE!

TAKING A CLOSER LOOK AT THE PATTERN ON THIS WIDE GAP YOU CAN EVEN SEE THE GHOST IMPRINT OF SOME CONTINENTS CONTOUR ALONG THE WAY!

-100,000,000



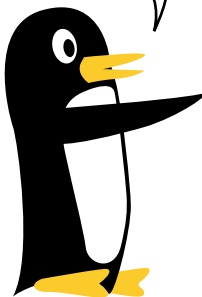
THEY DO NOT  
SHOW IN THE  
PALEOMAP!

THAT'S WHY WE  
CALL IT GHOST  
CONTINENTS!

THAT'S WHY WE  
CALL IT GHOST  
CONTINENTS!

**G.Earth Pin  
Ridge 09**

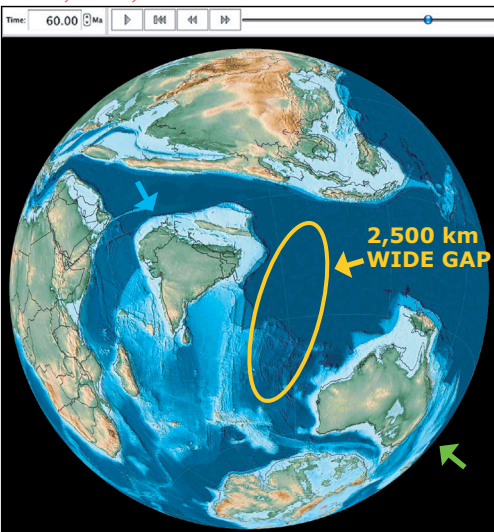
BUT THE  
IMPRINT OF  
THEIR  
CONTOURS ARE  
VERY EVIDENT  
MID WAY NORTH  
ON THIS  
PATTERN!



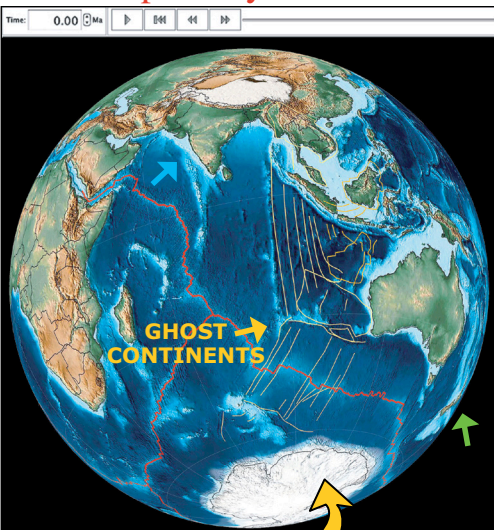
SHOWING  
THAT THEY CAME  
ALONG WITH  
AUSTRALIA AND  
ASIA. TO MID WAY!  
THEM THEY SHOOT  
UP NORTH  
FASTER!

CROSSING THE  
EVENT PATH!  
(LINE IN PINK AT  
THE TOP) BEFORE  
AUSTRALIA AND  
ASIA CRASHED  
IN TO IT!

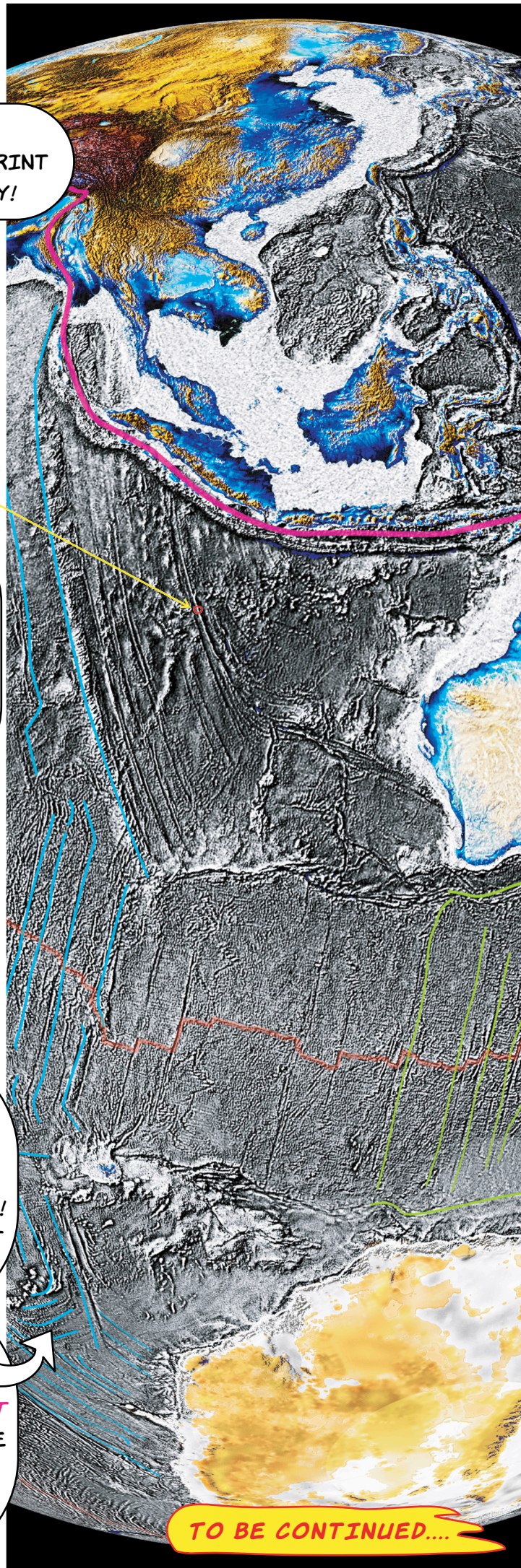
-60,000,000



## Paleomap Today



**Ghost Continents, Drag Marks**  
Pattern 2,500 km wide Gap.



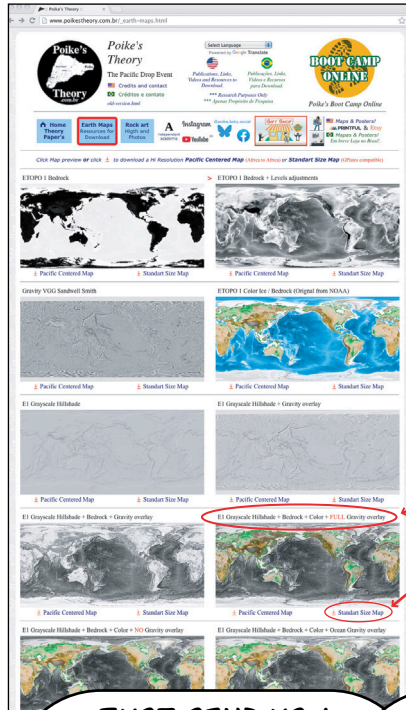
**TO BE CONTINUED....**



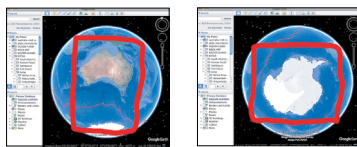
## Poike's Theory Home Page



## Poike's Earth Maps Page \*1



JUST SEND US A SCREENSHOT OF GOOGLE EARTH WITH A DRAW OF YOUR DESIRE CROP!



\* Please draw a rectangle for best fitting.

AND YOUR CHOSEN MAP WILL BE PROCESS WITH 300 DPI FOR HI RESOLUTION!

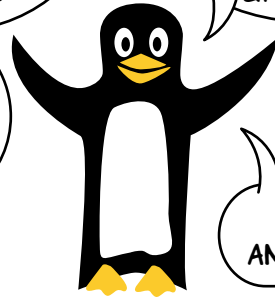
**How it works?** You send the name of your requested map and sample of crop, to our **E-mail** or **WhatsApp** contact:

1. We will reply with a sample of the crop low resolution to be approved.
2. Once is approved you can wire the job fee, then we will process your MAP to our online store, and send you the **JOB Number** so you can find and purchase at **Etsy**\*3.

MEANWHILE...

CHECK POIKE'S HOME PAGE FOR ALL THE DOCUMENTS AND DRAFTS!

SEE ALSO OUR EARTH MAPS PAGE!



AND FOLLOW OUR BOOT CAMP ONLINE FOR OUR MONTHLY UPDATES!

AND NOW PRINTED POSTERS, MAPS AND STICKERS ON OUR ONLINE STORE!

HI LILY, I HAVE SOMETHING TO TELL YOU TOO!

YES GRANDPA POIKE WHAT'S NEW?

NOW YOU CAN ORDER A CUSTOMIZED HIGH RESOLUTION PROFILE OF YOUR CHOSEN MAP!

PICK A NAME FROM ONE OF OUR **STANDARD SIZE MAPS!**

Map Name

Standart Size Map

AND STARTING AT USD \$ 29.<sup>99</sup> WE WILL PROCESS YOUR CHOSEN MAP PROFILE (CROP) ON PRINTFUL\*2 AND PLACE IT AT OUR ETSY STORE\*3 FOR YOU!

THEN WITH A JOB NUMBER YOU CAN FIND AND BUY! ALSO YOU CAN SEND TO YOUR FRIENDS AND PEERS TO BUY!

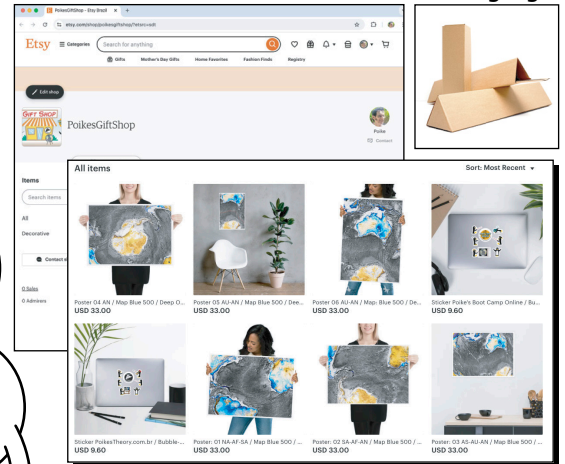
CHEERS!



## Poike's Boot Camp Online



## Etsy Store: PoikesGiftShop



Printed by:

**PRINTFUL**

Sold at:

**Etsy**



**Available Sizes:**  
**Medium** 42x59.4 cm  
**Large** 50x70 cm  
**Extra Large** 70x100 cm, may be available upon request.

It will be available at **Etsy Store**\*3 for 60 days by default, and it can be republished upon request with the **JOB Number**.

## Custom Globe Map Poster Contacts:

**E-mail:** poike@cybergarage.com.br

**WhatsApp:** 12 55 98122 0399

We will answer in a 24hs turn around, inquiries in English, Portuguese or Spanish.

\*1 - Poike's Earth Maps: [http://www.poikestheory.com.br/\\_earth-maps.html](http://www.poikestheory.com.br/_earth-maps.html)

\*2 - Our printing partner PRINTFUL: <http://www.printful.com>

\*3 - Our online store Etsy: <http://www.poikesgiftshop.etsy.com/>