

Ana o Keke at Poike, first scene - Cave and Petroglyphs



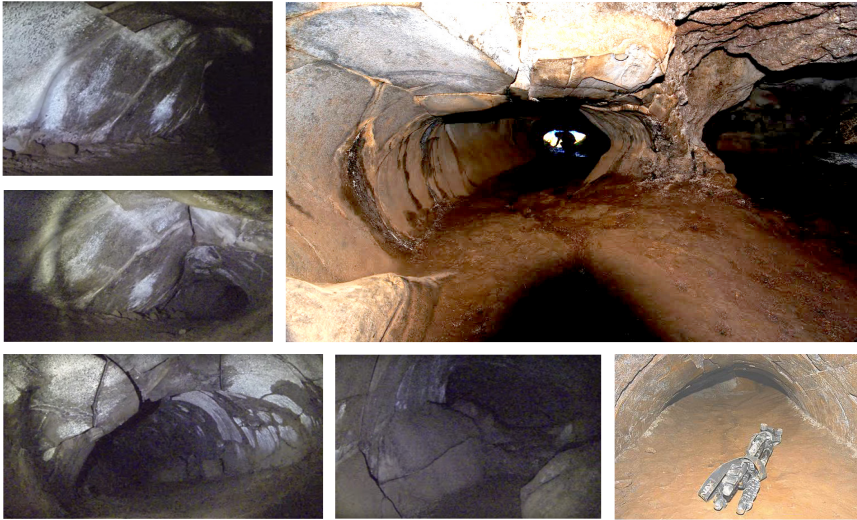
Ana o Keke
The cave of the white virgin



Hanging on a cliff the cave is looking East,



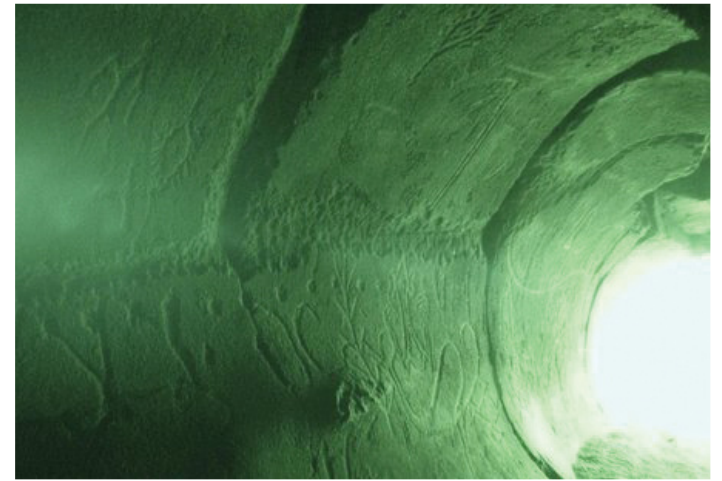
details inside the cave show impressive stone work



The drawings at the entrance of the cave seems to have a sequence telling, a history, this is our version:



literally looking because it has an impression of mans eye sight, looking towards the entrance hole, it faces East to open ocean, this is evident, but what does a produced cave pointing toward open ocean represent? It cud be the income direction of the comet event,



In the tunnel that goes in the back of the cave are signs of being not just a lava hole, but man made in some parts, integrated with the natural formation, stone assembly that reminds ancient sites like the Inca, Maia stone works.

DRAWINGS AT THE ENTRANCE OF ANA O KEKE

Cross over, symbols of death for man and plant or being

Plant or being looking disturbed at the event

Sky opening and drop a mass of water, part of the comet event

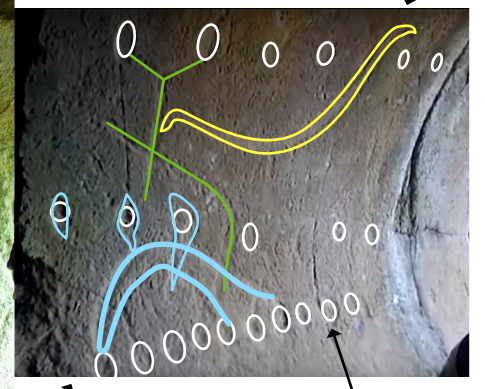
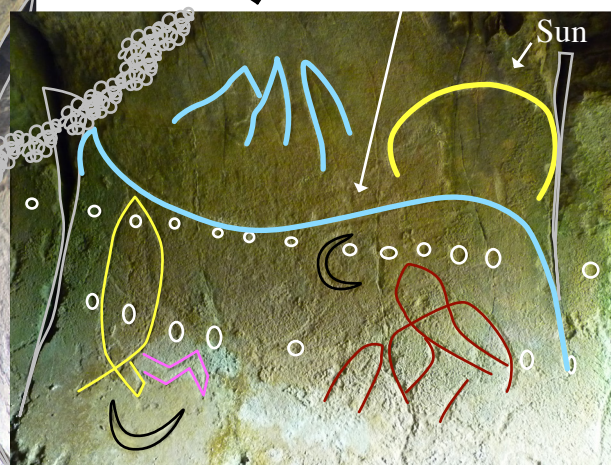
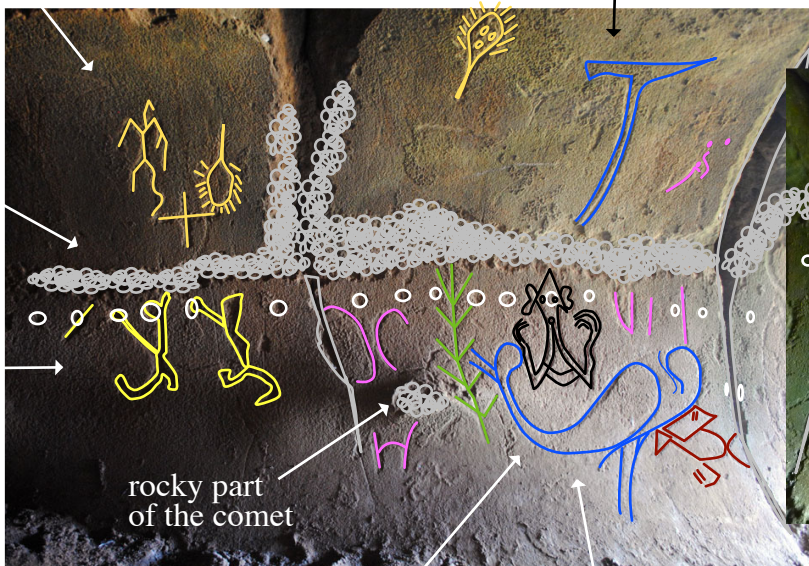
Bigger waves, maybe Tsunamis

Water dividing the sun and the moon, and the moon being sent away

ENTERRING THIS WAY

Fist part of the drawing near the entrance Some lines may be a plant

A Reed boat



Possible comet trail
Two men walking away

Mass of water fall and break the plant, and pounding on the fish,

A figure of a man in the middle, very disturbed, horrified by what he's seeing.

Fish and turtle struggling to keep up with the water

Wave formation giving an impression of troubled waters

White circles may be a timeline or calendar

the interpretation of the event described on this wall carving is part of a bigger picture, this can be called the first scene of the first act, it belongs to the next paper: "Poike's first act, the comet approach" there will

better describe the effort of building a full set of monuments to stage the whole first act.

Note: the PDF version is the higer resolution.



this is a on going study, is posible revised from time to time, if anybody have different material or opnion, please talk to us by: info@poikestheory.com.br