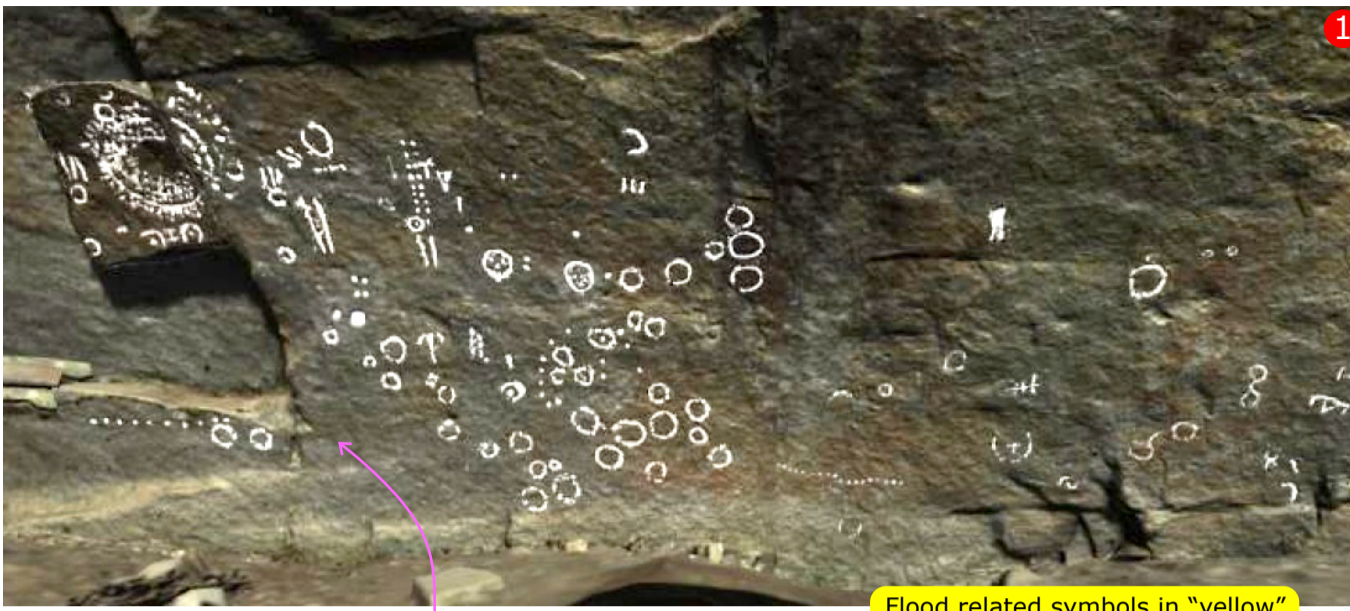


Post Flood Rock Art III Itapeva, São Paulo, Brazil, Rock Art message.

The same way words can vary by context, symbols do so, here is our concept to understand this rock art iconography at Itapeva panels.

1 of 3 Rock Art Panels at Itapeva, SP, Brazil.



Flood related symbols in "yellow"

A clear cut in the calendar indicate the drastic change of seasons before and post event, drawn in a natural fault of the rock.

Natural fracture in the rock symbolizes the water body drop intervention ->

<-- Post Flood <-- Life goes on

part of the engraved rock art fell after 1970's drawing

Size reference

Time before

the part of the calendar is missing in this picture, previously fell

Reproduzir (k)

4:58 / 17:26

Figura 2 – Inscrições do Abrigo Itapeva segundo Aytai (1970, p.31).

Interruption in the timeline

Earth and the cosmic body rendezvous

The Flood sign, a T or umbrella like form, represents The Pacific Drop, the Great Flood.

next to the flood sign, the cross means the peoples that cross over, the death's upon this event.

a little above the flood sign, this wing like shape, also represents the lost souls, the death's upon this event

Panels 2 and 3

After effects Fusion The approach

<- Just like our paper # 03 - The Comet

http://www.poikestheory.com.br/_papers/03-the-comet/03-the-comet.pdf

Location of the 3 sites found in the Itapeva Complex

Time before the event.

Post flood, after the event.

Struggle upon the approach

Third rock from the sun

Incoming body of water, The Pacific Drop

Inscrição do Vira na Faxina

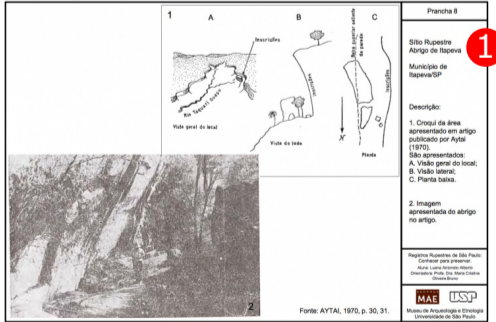
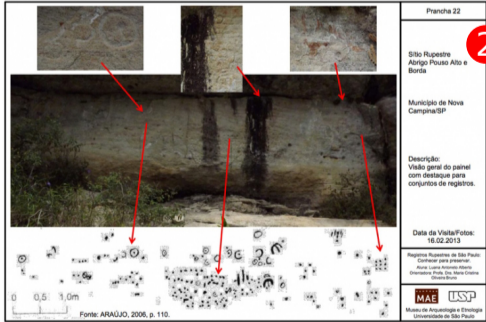
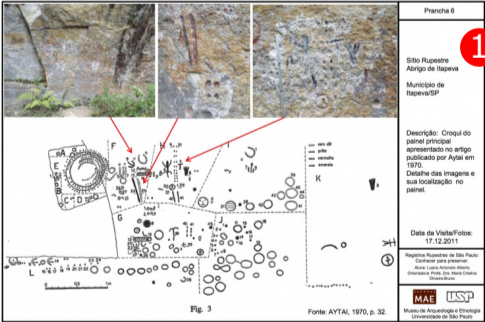
Anexo 22

Imagem feita através de decalque das gravuras do abrigo da Fazenda Pouso Alto e Borda.

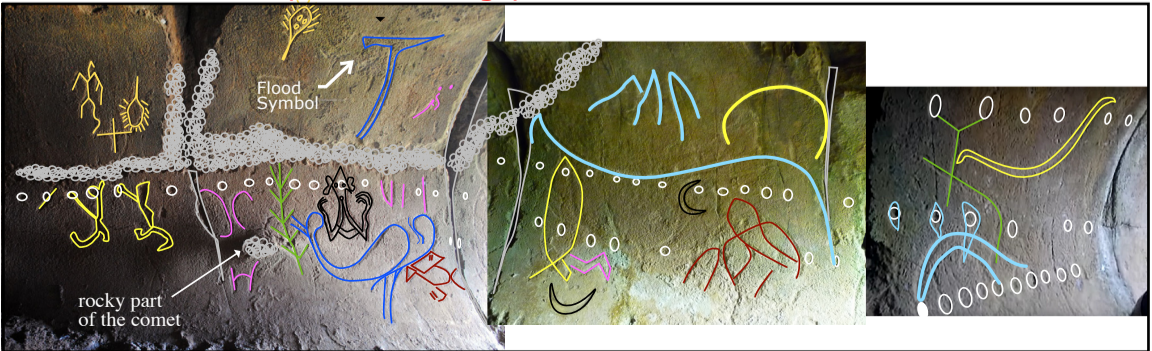
Online References to this document:

- J. A. Fonseca.
<https://www.viafanzine.jor.br/fonseca.htm>
- Silvio Araujo,
Teses, USP. / 02TDESilvioAraujo.pdf
- Luana Alberto,
UNIVESP.
<https://www.youtube.com/watch?v=OPuxE9I74EA>

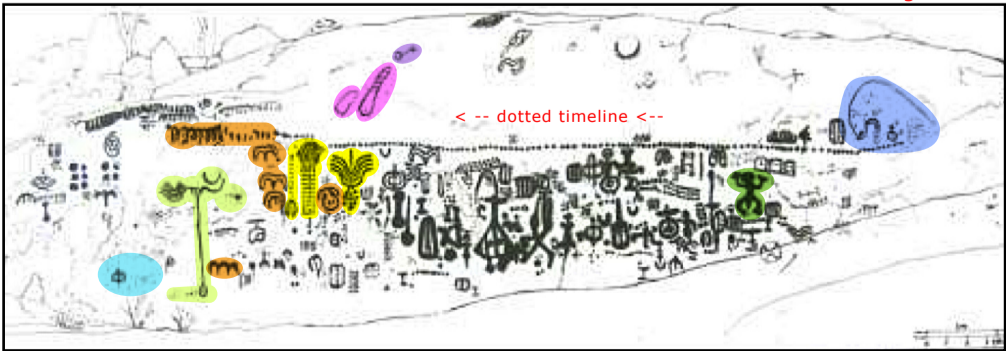
Plates Souce: Museu de Arqueologia e Etnologia (MAE) Universidade de São Paulo (USP)
Luana Antonio Alberto / Dra. Maria Cristina Oliveira Bruno



Previous documents, same message,



Post Flood Rock Art I - Easter Island



Post Flood Rock Art II - Ingá Stone