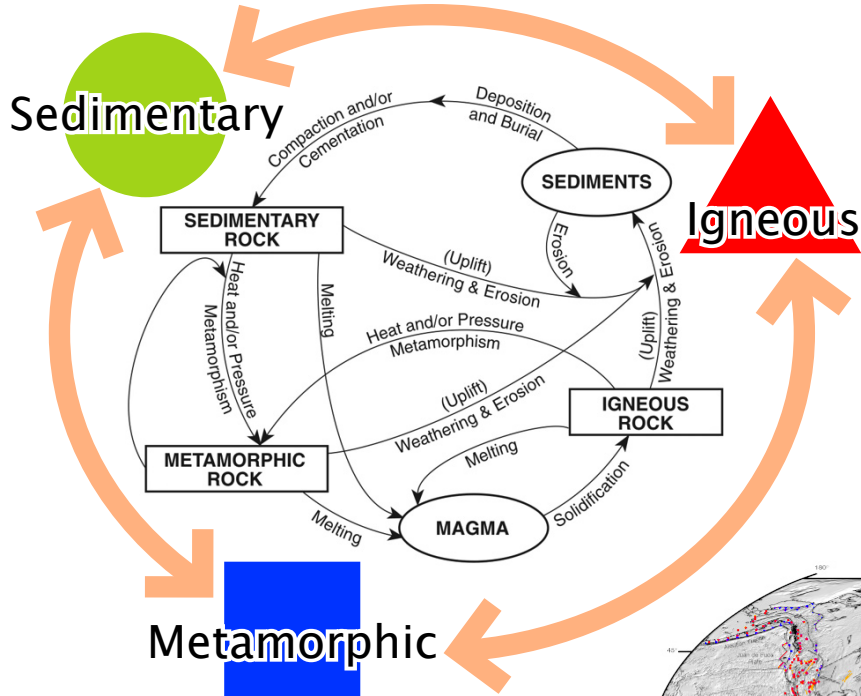


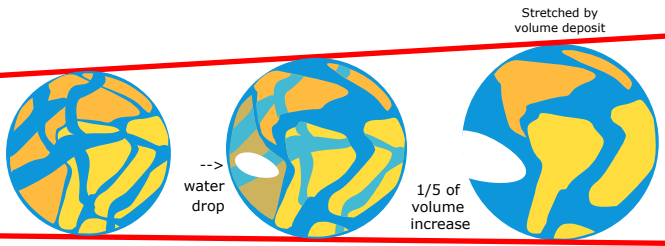
# Dating the Pacific Drop III

## A rock is just a rock.

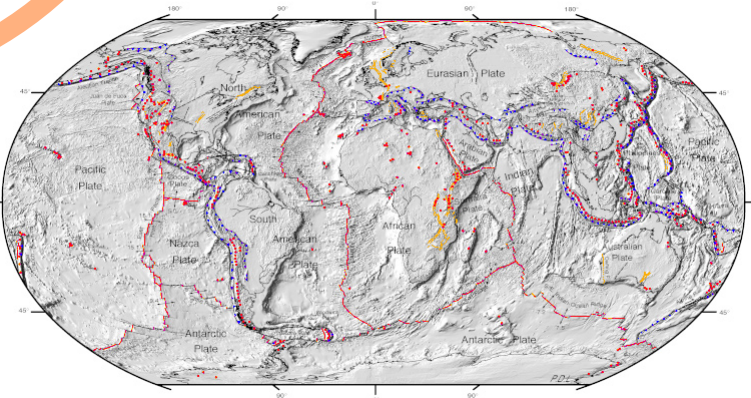


The tectonic movement speed measure today is a misleading way to calculate continental drift, overall it's trajectory in millions of years. Analyzing the consistency of the deep ocean floor drag marks pattern, make it obvious that the deep ocean floor will not endure with this same pattern form, for the millions of years attributed to it.

At any giving point on Earths Revolutions, a Rock can change it Status, that's why the crust shuffle creates a great geological puzzle.



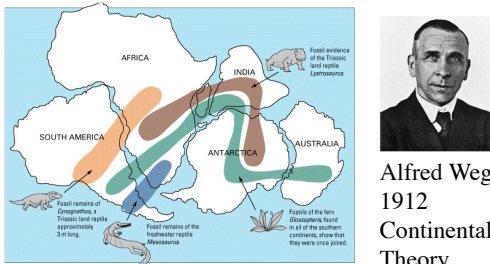
So this Event, the Pacific Drop create a gigantic puzzle for the geologist, due to the crust shuffle and continental drift in a single day,



Therefore the speed of Tectonic movement today, is just the inertia of an event that reshaped Earth's crust in a single day, around 10.000 years ago, the Pacific Drop, it can explain the flood and the odd human migration theories.

to get a clear picture of this event, just analyze the deep ocean (below a 1000 meters) the drag marks pattern is evident, but it can be very puzzling, so we try to help through this papers, maps, and videos, at [www.poikestheory.com.br](http://www.poikestheory.com.br)

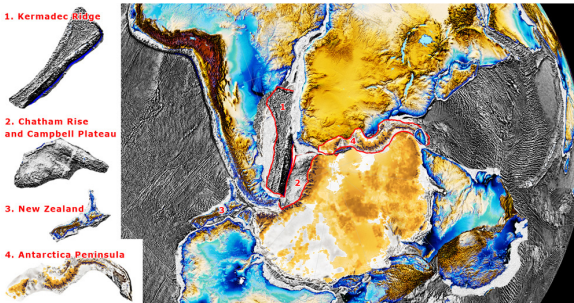
Wegener was right and still right, we just change the pace of it,



Alfred Wegener 1912 Continental Drift Theory

Source: [https://en.wikipedia.org/wiki/Alfred\\_Wegener](https://en.wikipedia.org/wiki/Alfred_Wegener)

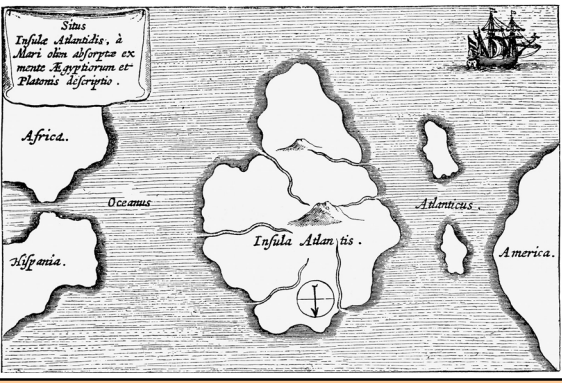
and we fine-tune the continents alignment\*, to match the tracks of the ocean floor drag marks.



\*very different of the current layout

Plato scenario is chaotic, talking about the time the Atlantic was navigable, and them a mud barrier covering it all around 9.000 before his time (360 BCE). *We can relate to that in this theory. See paper 18.*

This map may not be upside down, its posible to be the configuration before the pacif drop, with the continetal drift as consequence.



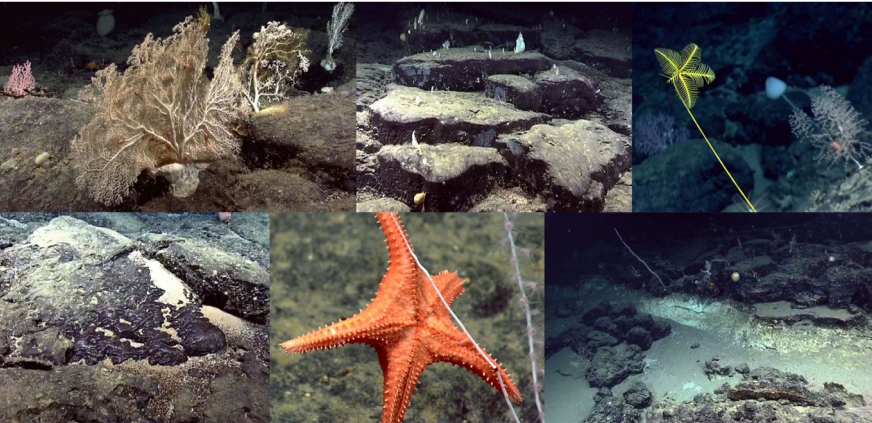
Is there really an error? in the process of dating dinosaurs bones with Carbon-14? Dinosaur bones with Carbon-14 dates in the range of 22,000 to 39,000 years before present.

What about?

Soft tissue found in dinosaur bone. >

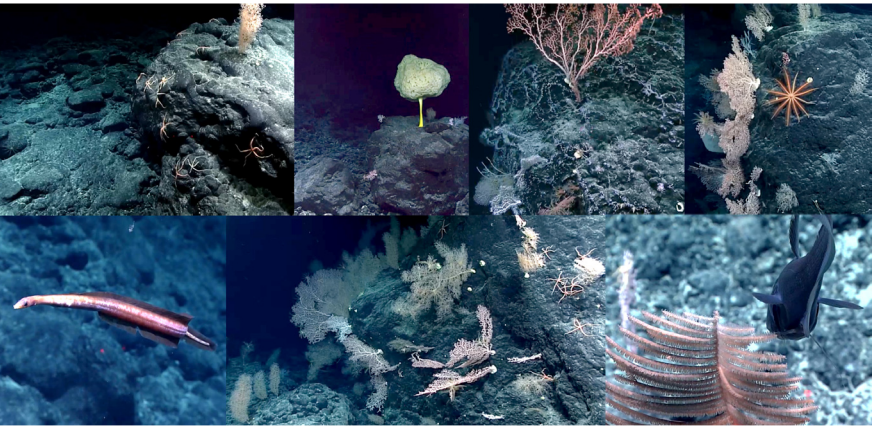
Atlantic Ocean - Atlantis II Seamount about -2.400 meters / misleading dated about 90.000.000 years old.

Source Video: [Okeanos Explorer - Dive 07 - Atlantis II Seamount Complex](#)



Pacific Ocean - Sibelius Seamount about -2.600 meters / misleading dated about 65 to 95.000.000 years old.

Source Video: [Okeanos Explorer - Dive 04: The Ocean Knows No Boundaries](#)



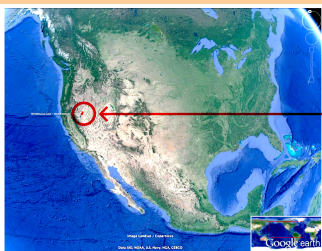
## Look deep for evidence

Deep Ocean Floor below 1000 Meters, look like 10.000 years old, but not 10.000.000 or even 80.000.000 to 120.000.000 years old, like is estimated in some places.

There is the Sea Lilly and other fossils like creatures, that was found in the shallows on the Jurassic period, and nowadays they are only found colonizing the dark and deep seafloor.

Because at this event some got exposed to dry land to fossilize, and some got spread in the new deep ocean, getting adapted to the new gravity, and topography conditions, just like the megafauna explained at the paper Dating the Pacific Drop II, and nowadays you can see them colonizing the deep ocean floor.

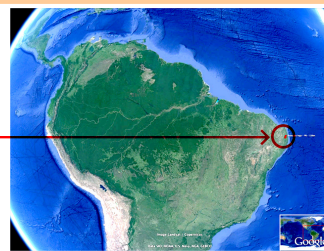
A Word Wide Rock Art database is in need to better understand the early occupations and migrations, by comparing them, like this two rocks below, one in Nevada, USA, and the other in Paraiba, Brazil, both with very similar style, and much more cud be found before at Google Earth Pictures, but now they took the pictures down (Big loss).



Winemuca, Nevada, US



more at: [www.rock-art.poikestheory.com.br](http://www.rock-art.poikestheory.com.br)



Inga Stone, Paraíba, BR