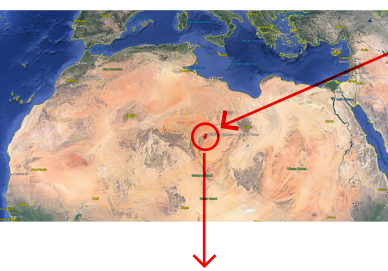
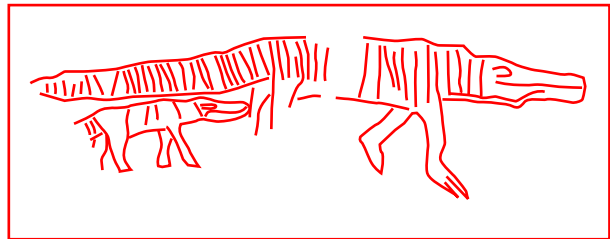


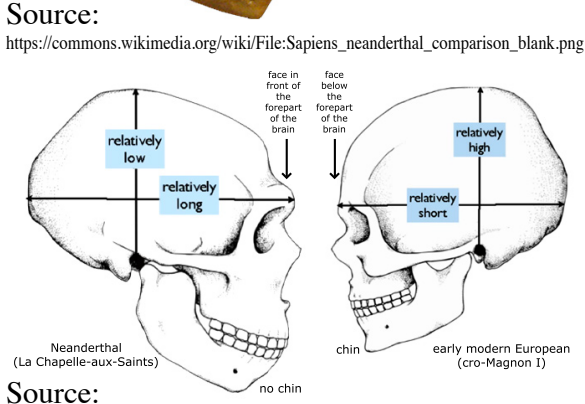
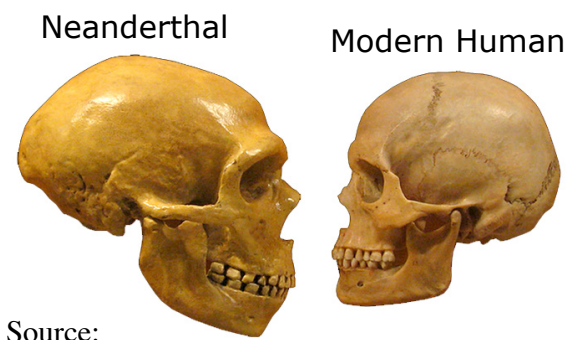
Dating the Pacific Drop II Animal reaction to gravity increase on Earth.



Wadi in Habetter, Libia
This rock art depiction of a crocodile is a clear sign of being done earlier or right after this event, before gravity play it's role into the "evolution of the species", to better adapt to the new environment.

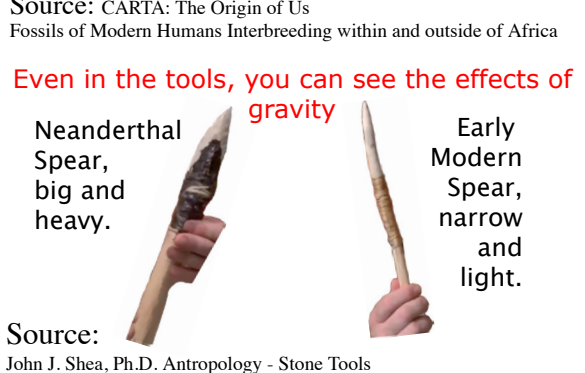
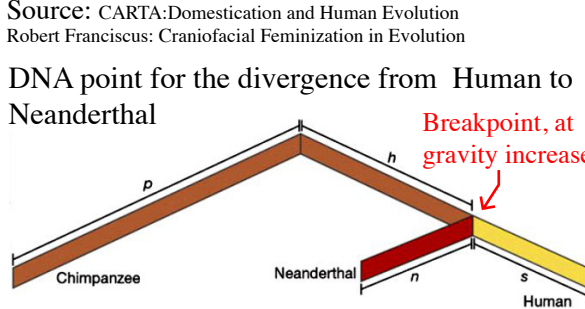
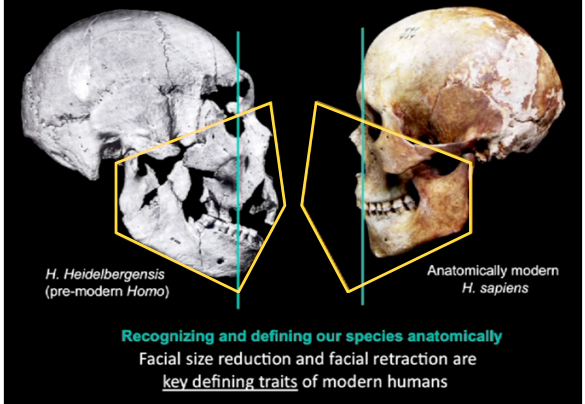
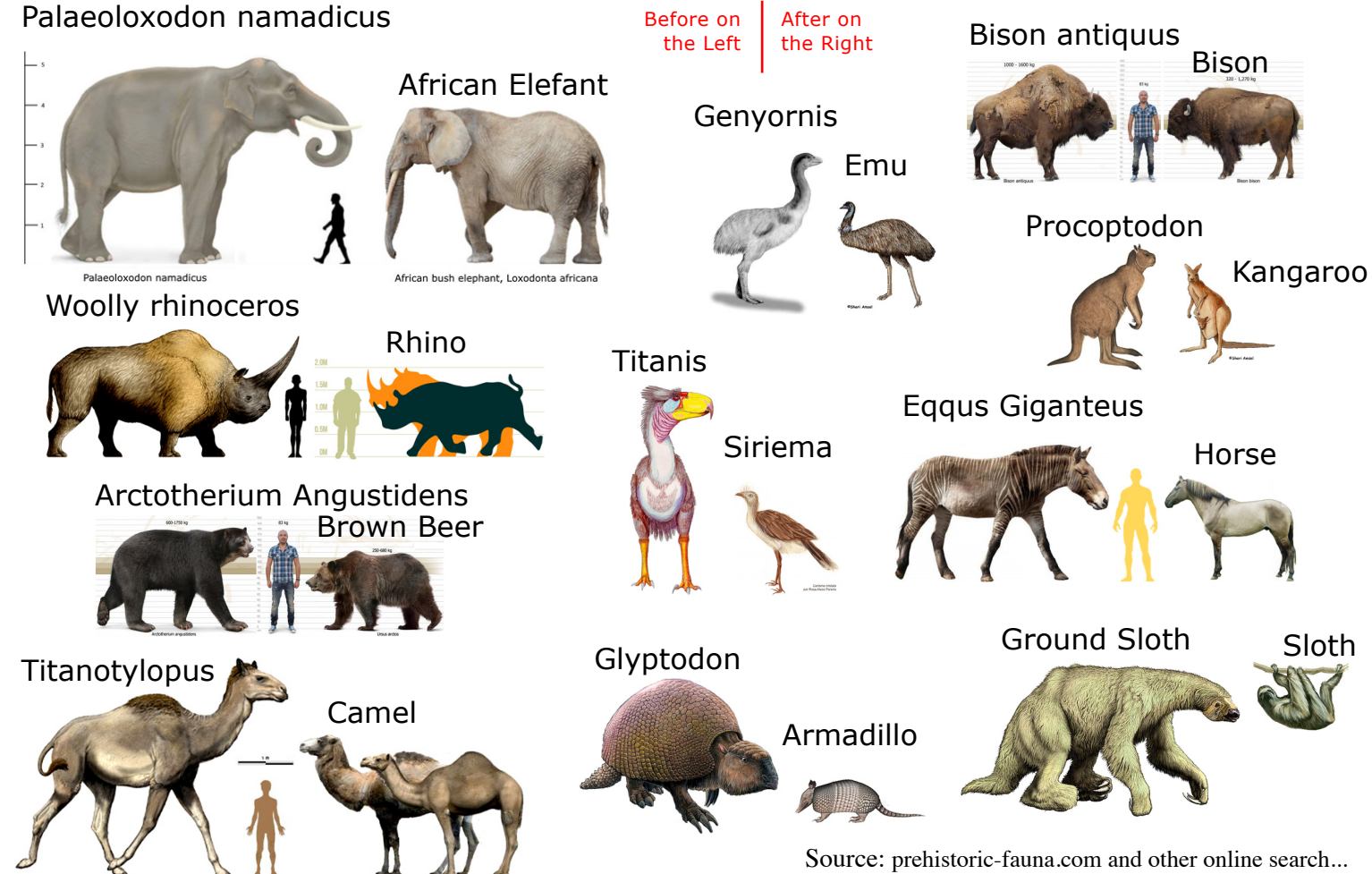


The Transition from Neanderthal to Modern Human, forced upon by gravity. A reaction from lower to higher gravity force, shows an adptation to the stronger gravity force in the Modern Human, after this event "The Pacific Drop".

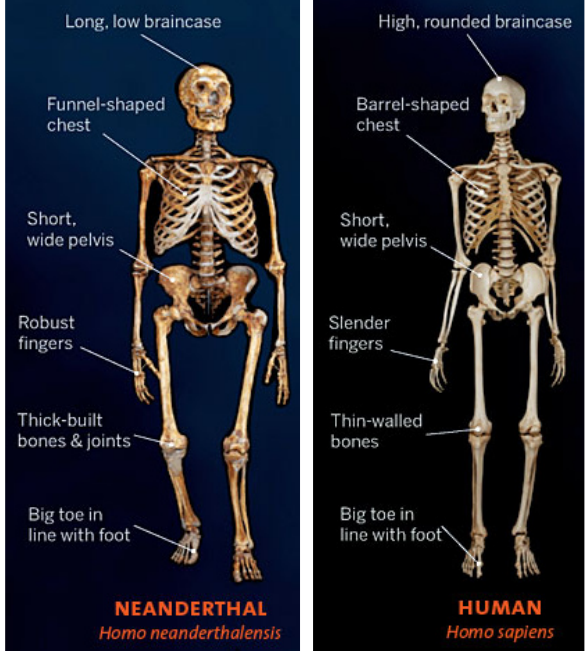
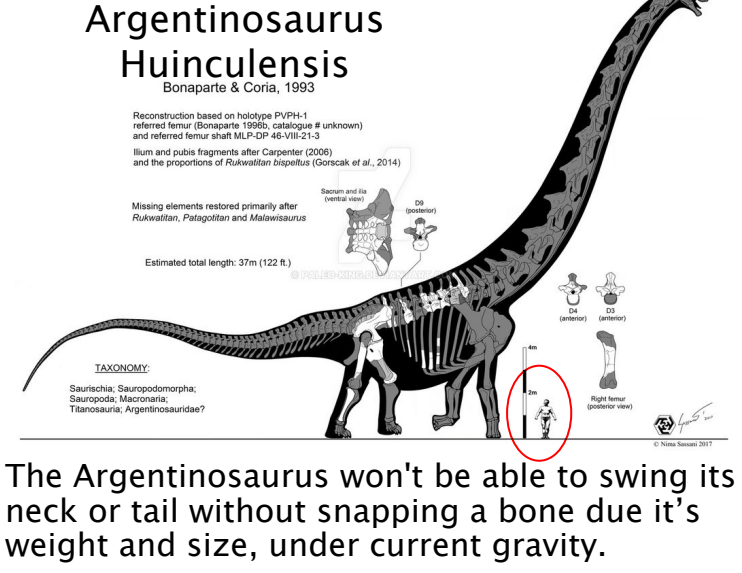
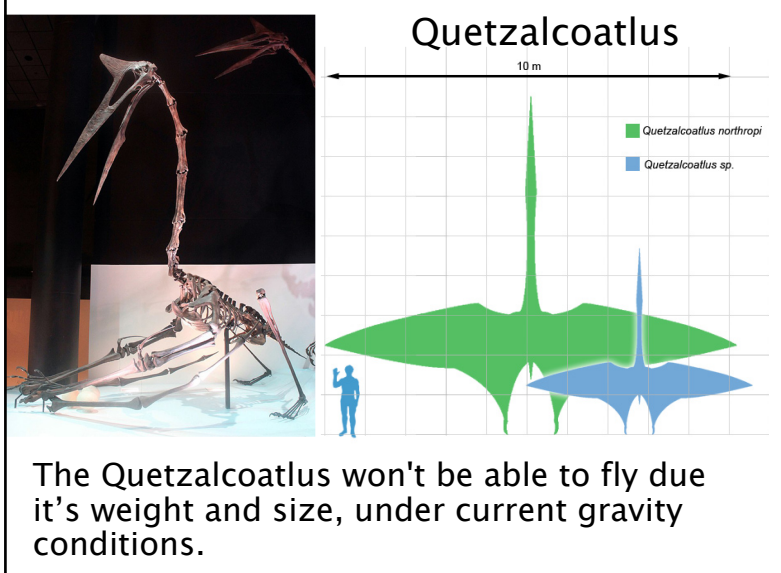


Megafauna Extinction

Many species from the megafauna survive this event, getting adapted to the new gravity environment.



Some early extinct animals that won't be able to perform on present Earth's gravity conditions.



Source: American Museum of Natural History <https://www.amnh.org/exhibitions/permanent/humanorigins/meettherelatives/w512.html>