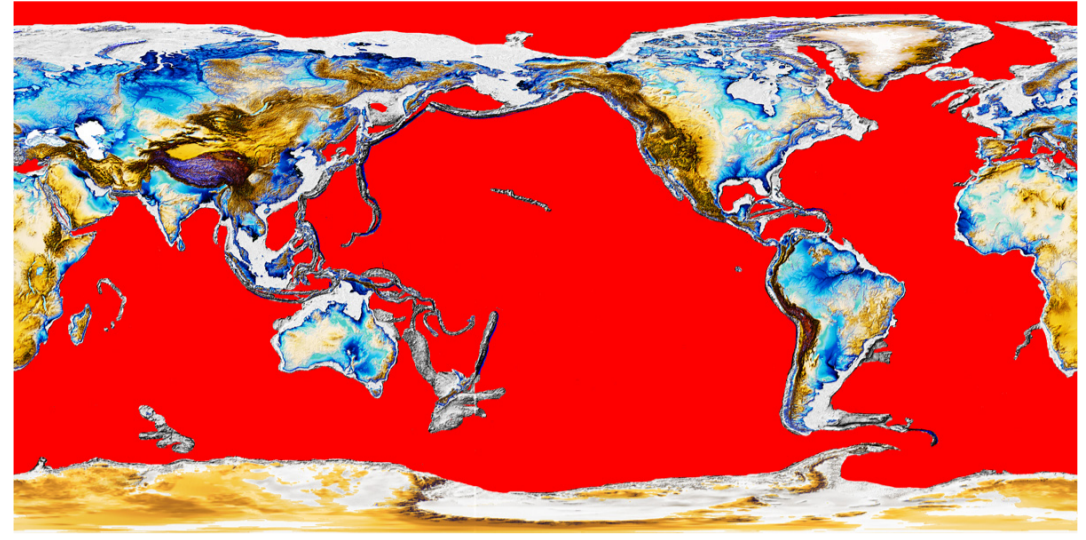
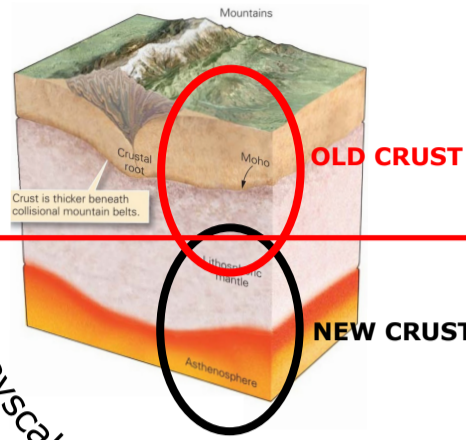


# 21 - Final considerations II: Old Crust = dead fossil / New Crust = living fossil.

This theory is based on an event that shuffles the terrain, making it very confusing to understand, the evidence lies in the ocean floor's drag marks pattern. To understand this features is to understand the continental drift.

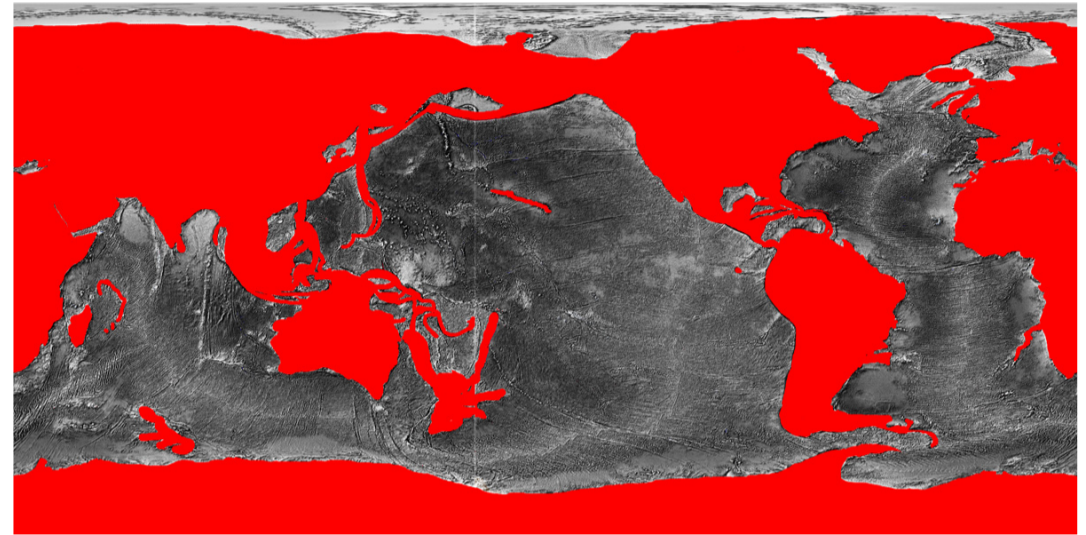
## OLD CRUST < - In color excluding the red - >

Cover the whole Earth before the Pacific Drop Event, it had an average of ocean depth of - 800 meters, and the deepest being around the - 1.500 meters range, the same low profile topography was above water in the mountain ranges, those being 800 to 1.500 meters high.

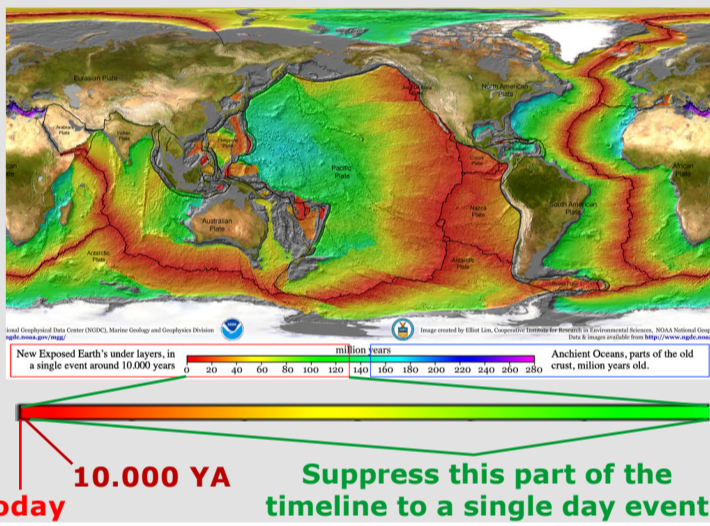


## NEW CRUST <- In grayscale (excluding the red) ->

The new crust is actually older material, part of the mantle, the lithosphere exposed in this event we call the Pacific Drop, Recently exposed by the Pacific Drop shuffle, creating the new deep Oceans, pushing the ancient oceans to dry land and giving room for the newly exposed deep ocean floor.



Is misleading the Ocean floor dating, based on the tectonic movements, because we can only observe the inertia of continental movements, the event that forges this current topography happen in a single day, imposing this new model upon Earth, which keeps on going on now, at a very slow pace.



The new crust is where some old crust dwellers (living fossil animals), got exiled, with a new depth average of 3.600 meters, and the very deep around 8.000 meters, (similar topography was shaped above the water line, creating the high mountain ranges.), and they being colonizing and developing in isolation, since the Pacific Drop event that reshape Earth's Topography around 10.000 years ago. That's why in the deep all you see is a young sea floor along with ancient living fossil animals in patches of blooming colonization.

### Pacific Ocean

Surrounded by Active Tectonics



about -2.600 meters / misleading dated about 65 to 95 million y. old

Source Video: [Okeanos Explorer - Dive 04: The Ocean Knows No Boundaries](#)



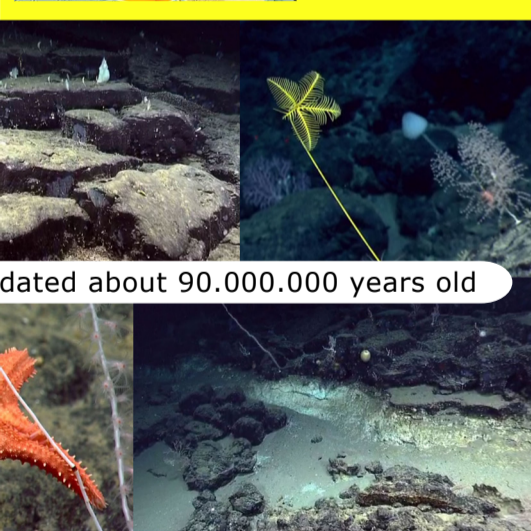
Sea Lily walking on the sea floor Nautilus

Source Video: [David Attenborough's - DEEP OCEAN - Serie 1: The Lost World of the Pacific](#)

There is NOT evidence of ancient ocean floor in the deep, by the drag marks, only volcanic floor or sandbanks, even in places supposed to be dated 60.000.000 or 90.000.000 years old, the deep seafloor does not show the age, it really looks like a 10.000 years old exposure.

### Atlantic Ocean

Surrounded by Passive Tectonics



about -2.400 meters / misleading dated about 90.000.000 years old

Source Video: [Okeanos Explorer - Dive 07 - Atlantis II Seamount Complex](#)

- White arch: The event from start to vanish point
- Pink line: The real tracks left over after the event
- All other color lines illustrate some of the Drag marks Pattern.

