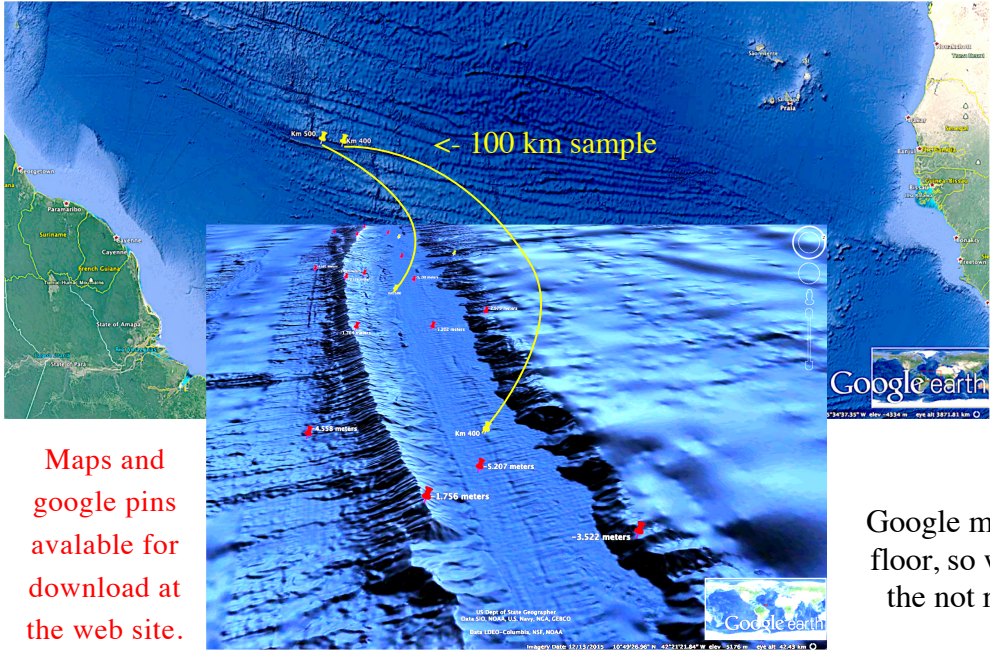


13 - Drag Marks III

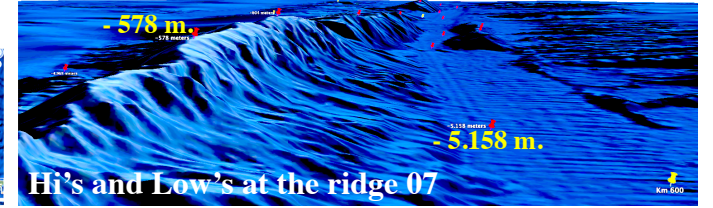
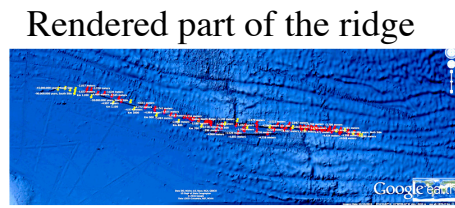
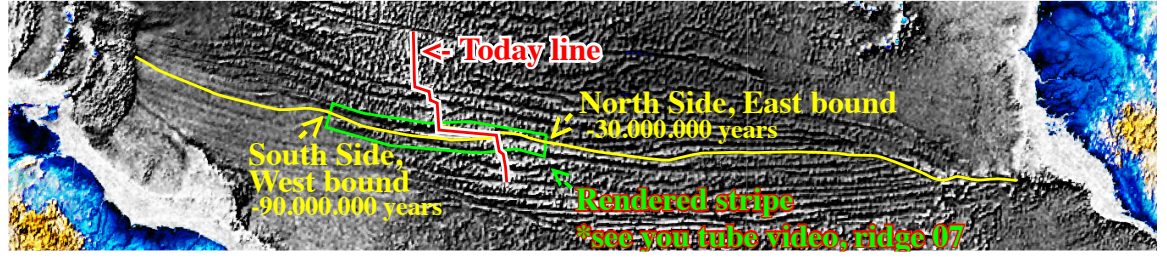
Ridge 07 one of a thousand. (we name it ridge 07 for this theory purposes only, is not an academic name)

The ridge 07 is one of what may be over a thousand ridges like that, formatting this ocean floor pattern, that definitely shows the exactly continental drift path. But still need to be fully understood.

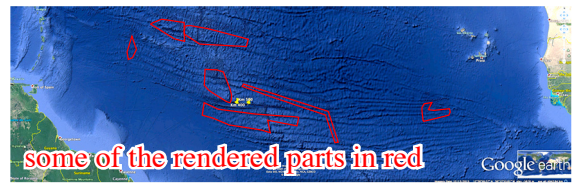
it simply does not match, the age and the pattern for the existing topography.



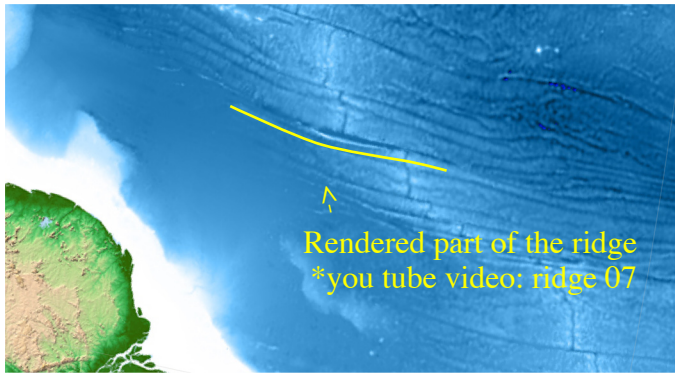
Maps and google pins available for download at the web site.



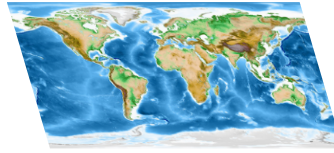
Google maps just rendered some few parts of the ocean floor, so we start to enhance some maps to make up for the not rendered parts, and with the gravity map overlay, we got a lot more to see.



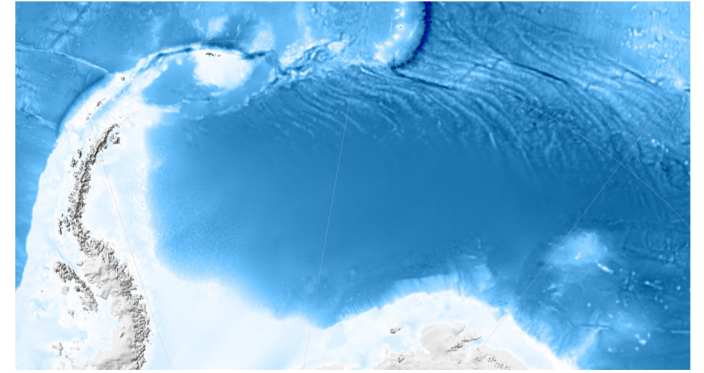
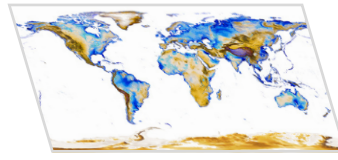
this Etopo1 color map shows very little of the impressive ocean floor formations.



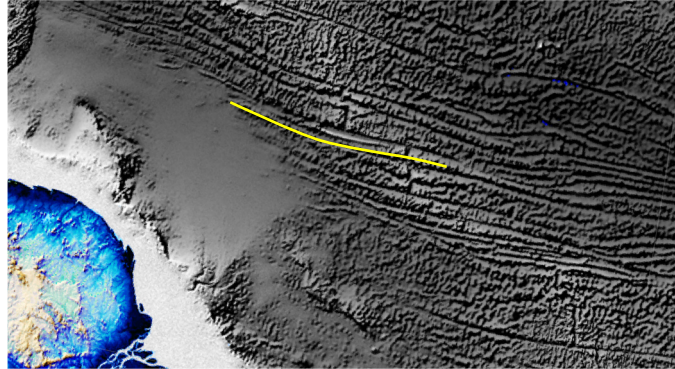
<- 1 - Color Etopo 1 map. Original format ->



Shallows and continents separation for color adjustments before overlay ->



now this bedrock enhanced overlay shows a lot more, it really shows the pattern, but near the shallows, it fades away given a discontinuity impression, so we go further,



<- 2 - Bedrock enhanced map. Overlay ->

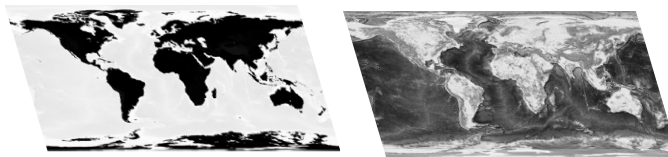
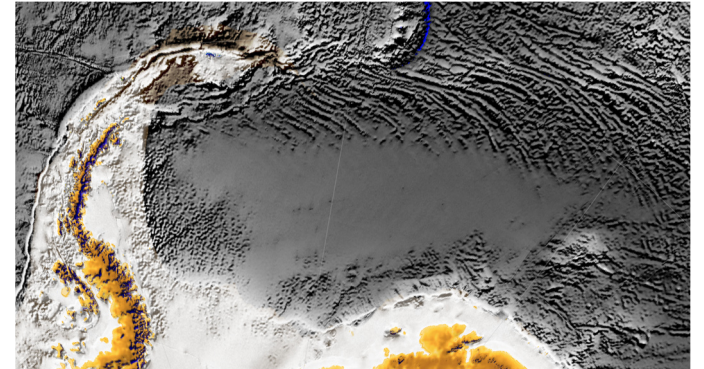
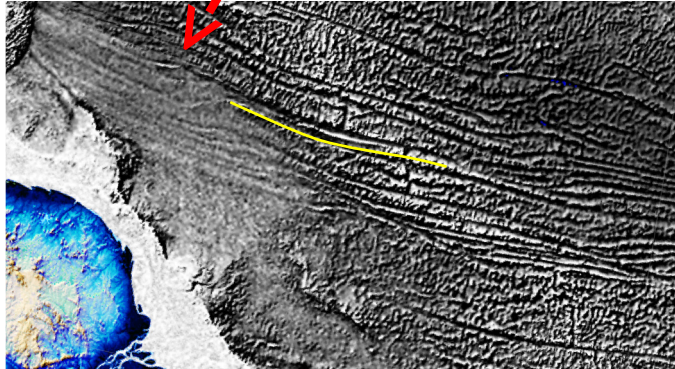


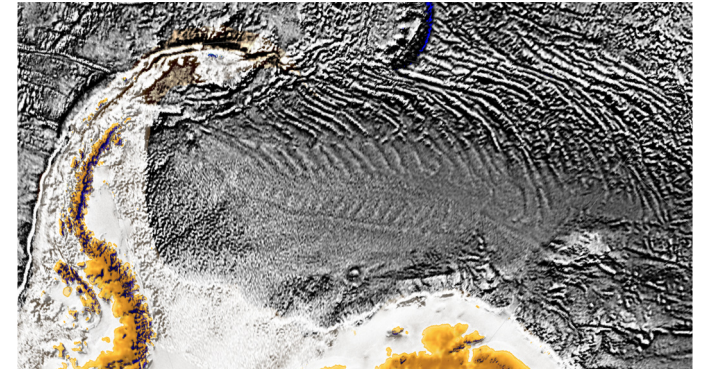
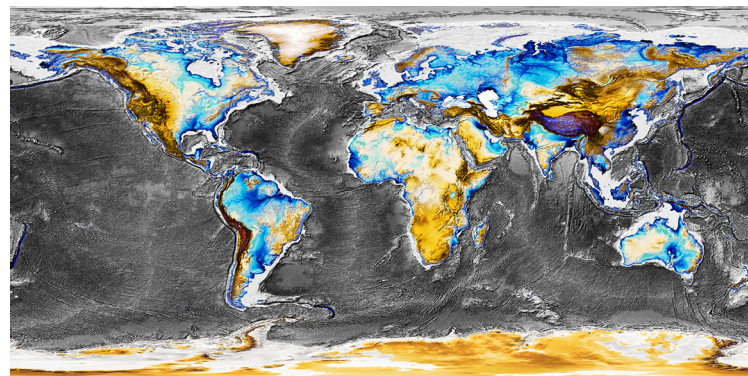
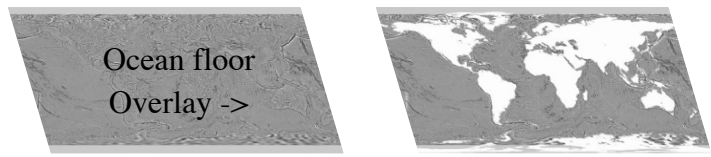
Image adjustments / levels and filter / sharpen before overlay



with this gravity map overlay, we have the continuation of the pattern, you can see the ridge 07 still going, even under the coastal erosion cover, as the gravity map show.



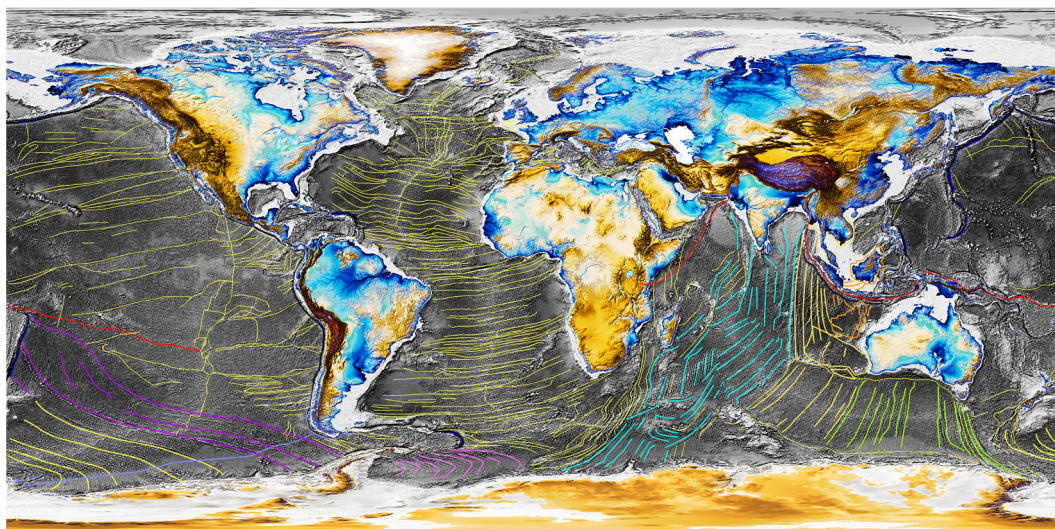
<- Gravity VGG Sandwell Smith map. Overlay ->



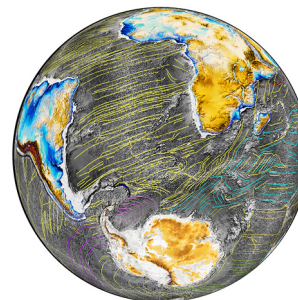
<- 3 Final - Detail Ocean Floor map

We choose one ridge of the pattern of drag marks on the ocean floor, to show how impressive a single ridge can be, and imagine there is a pattern of them throughout the deep ocean, but only parts of a few of them are rendered, so we can see, we believe that once they are revealed and broad study of the ocean floor pattern is done in this direction, we will be able to understand and reconstruct the real continental drift.

in this Earth map we visually raise the water level in the continents around 300 meters, by switching the Green color, for Blue color, simulating the water levels on the Old Earth's crust before the Pacific Drop event.



<- there is also available the drag marks pattern drawing for the overlay image on GPlates, for download on the web site.



CSI
EARTH

Crime Scene Investigation - Earth - Warning:
Don't mistake Iceberg drag marks, with Continental drift drag marks. The iceberg marks are loose cannon, off or cross ways whit the Continental drift pattern, and they are mostly shallower and fewer plowing tracks, it can't compare to the clear pattern grid left on the deep ocean floor.