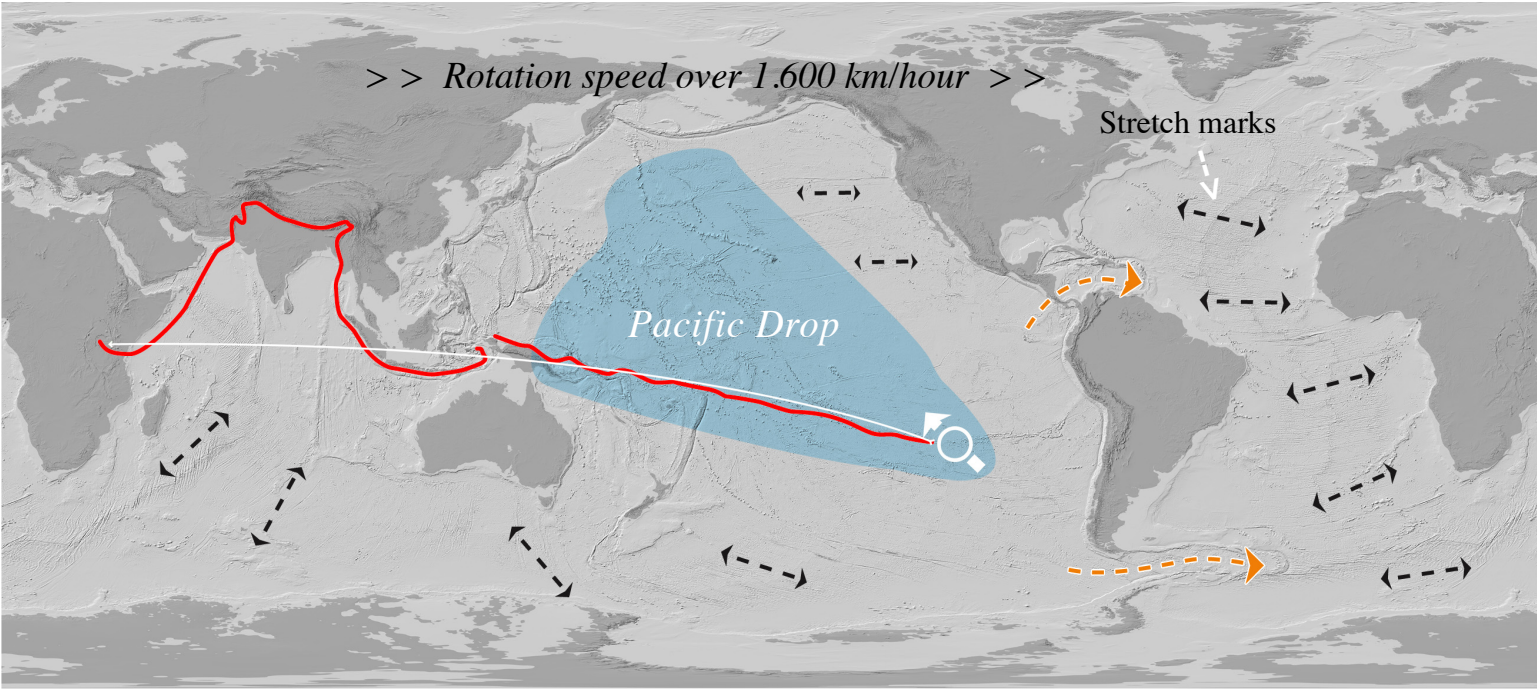


10 - Pacific drop

Once we Identify the crater (see previous papers) by understanding the ocean floor drag marks, we try to find a cause for this event based on this quilt of information, the Pacific drop is our explanation for the event:

“A large hollow ice body got crushed and taken by Earth’s gravity, being mostly ice it broke into the atmosphere into a large drop at the Pacific, with a Flood as well, due to enormous amount it increase the Earth’s volume by 1/5 of its current volume.”

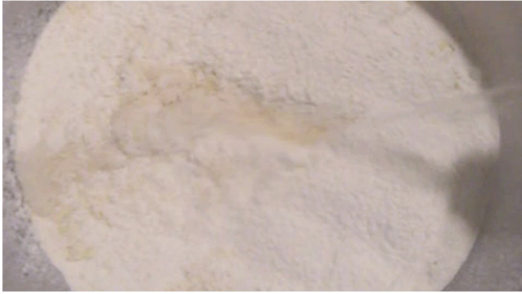
It covered more them 20.000 km, so is estimated to have taken around 11 hours



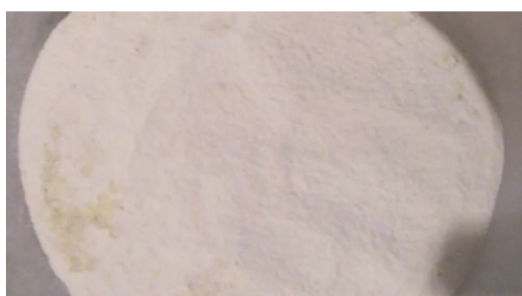
Pacific drop: (see also video Pacific Drop on the web site)



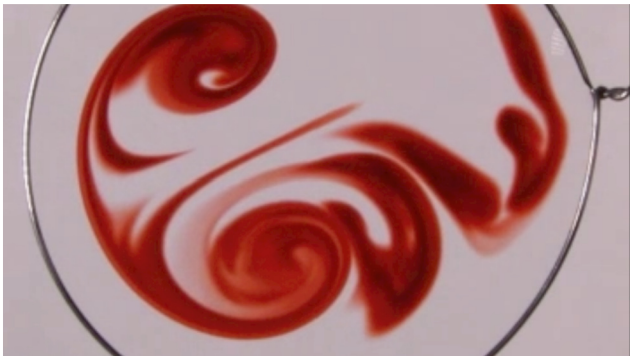
Source: Poike's Theory



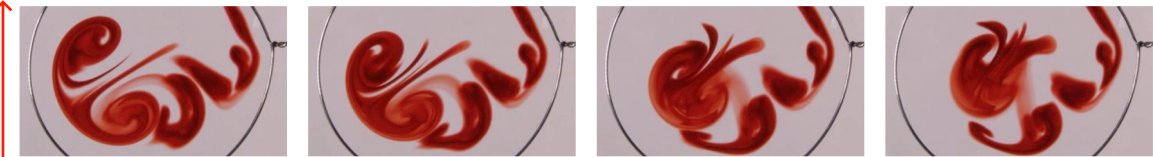
“The Ocean floor is old”, in fact, is older than the dry grounds today. Because it was made of the under layers of this very Earth, I believe most of the old Earth’s crust, oceans and dry land, is now exposed somehow, and all of the deep oceans are newly stretched mantle (under layers) and you can track that movement to understand the ocean floor drag marks.



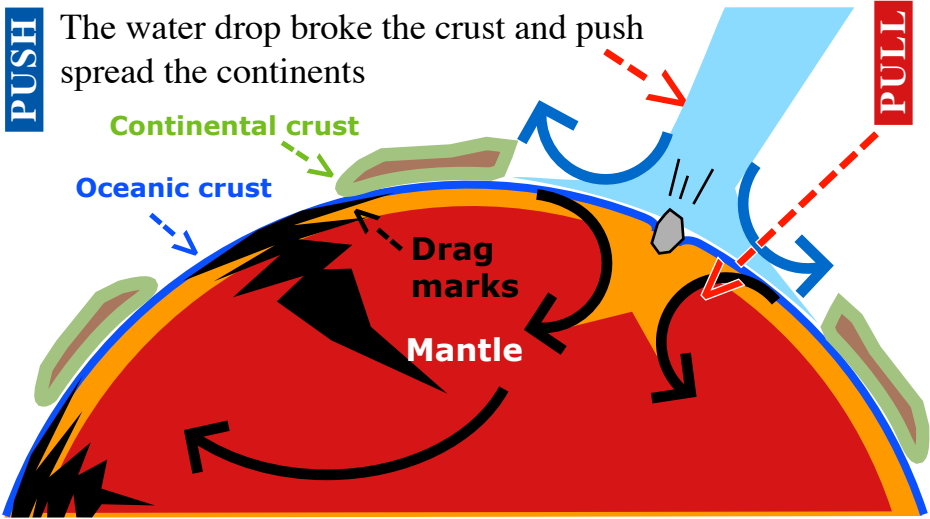
Vortex ring:



They are a scape route for the large amount deposit at the Pacific



Source: PhysicsCentral - Episode 4: Lenses and Vortices



The push and pull effect of the Pacific drop just revolve the Earth, just like kneeling dough to make bread, stretching the mantle and creating the deep oceans, and pushing the old crust, creating the mountain ranges, that’s also why is difficult to identify, is Earth on Earth + ice water, exposing most of the old crust, and sinking some.
*** if there were rock parts, it sunk throughout the mantle on the Pacific Ocean.

Note: This Pacific drop example was made with a plate of strained baking flour and a regular size syringe without the needle.
* Video Available on the web site.



South Atlantic anomaly highlights the entry point of this event, leaving this entrance trail in the Earth’s atmosphere

